



Update on the 2020 Atlantic Menhaden Fishery

NOAA FISHERIES

Sustainable Fisheries Branch
NMFS Beaufort Laboratory
Beaufort, NC



GSMFC - Fall Meeting
September 24
Virtual

2020 Landings for Reduction

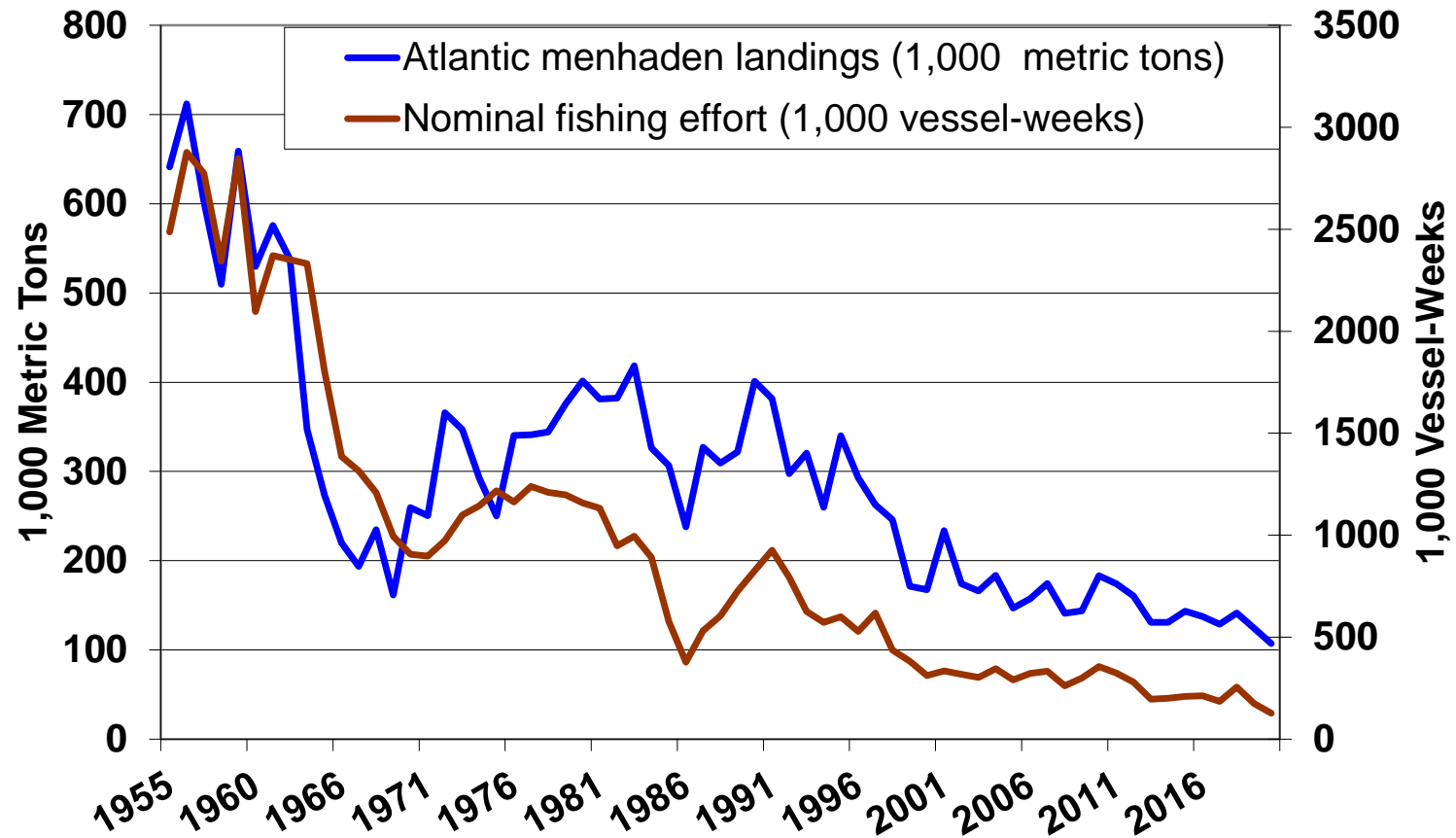
- One fish factory on Atlantic coast at Reedville, VA, since 2005
- As last year, 2020 landings for reduction constrained by the coastwide TAC
 - TAC remained at 216,000 mt for 2020 (165,941 mt for reduction)
- Through August 31:
 - 75,915 metric tons (or 250 million standard fish)
 - Decreased 28.3% from 2019 (105,855 mt)
 - Decreased 21.7% from previous 5-yr average (96,917 mt)

Vessel Participation in 2020

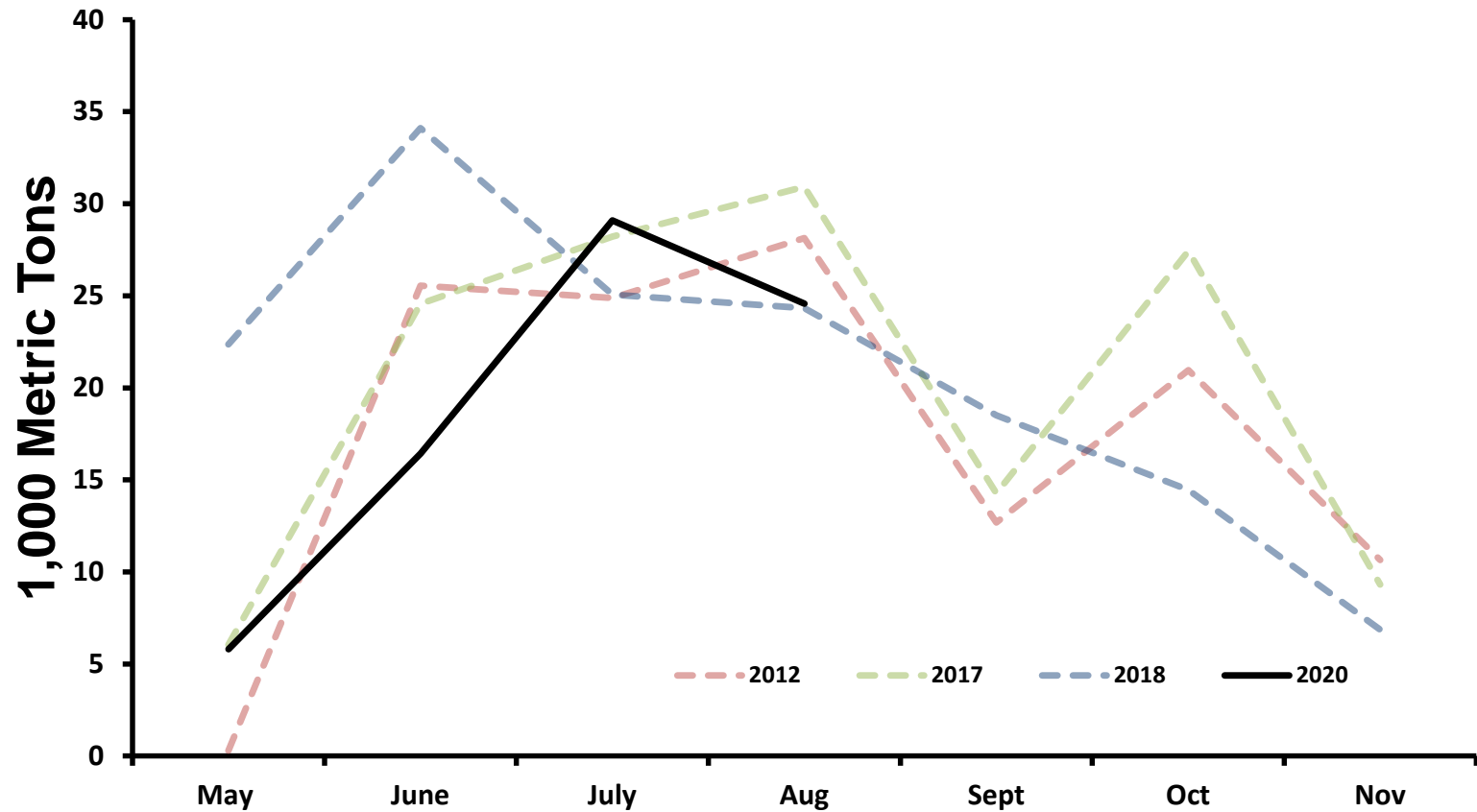
- 7 Omega Protein vessels unloaded Atlantic menhaden for reduction in 2020 at Reedville
- 1 VA 'snapper' boat (bait vessel) also unloaded minor quantities for reduction at Omega
 - One landed for **bait** only
- ~4 purse-seiners reported landings for **bait** in Atlantic



Reduction Landings and Nominal Fishing Effort



Reduction Landings by Month



Coastwide Stock

- Bait Closures
 - Maine Episodic Event Fishery: Closed July 2nd
 - Incidental take allowed (6,000-lb limit)
 - Massachusetts: Open (95% of quota)
 - Rhode Island: Closed July 7th
 - June 25th reduced to 120,000 pounds/vessel/day
 - New York: Open
 - New Jersey: Open

2018 Atlantic Menhaden TAC, by allocation unit

| Unit | Percent of TAC | 2019 (1,000 Metric Tons) |
|----------------|----------------|-----------------------------|
| ME | 0.5% | 1,106 |
| NH | 0.5% | 1,069 |
| MA | 1.3% | 2,725 |
| RI | 0.5% | 1,107 |
| CT | 0.5% | 1,103 |
| NY | 0.7% | 1,477 |
| NJ | 10.9% | 23,250 |
| PA | 0.5% | 1,069 |
| DE | 0.5% | 1,096 |
| MD | 1.9% | 4,038 |
| PRFC | 1.1% | 2,295 |
| VA (Reduction) | 70.8% | 151,392 |
| VA (Bait) | 7.9% | 16,821 |
| NC | 1.0% | 2,044 |
| SC | 0.5% | 1,069 |
| GA | 0.5% | 1,069 |
| FL | 0.5% | 1,108 |
| Total | | 213,840* |

* Does not include the 1% episodic set-aside

Atlantic menhaden assessment

- Single species assessment and ERP (ecological reference point) both accepted for use in management
 - Single species assessment will be used, but management may be informed by ERP models
- ERP effort is unique and has spawned several research papers

Questions?