



Update on the 2019 Atlantic Menhaden Fishing Season

**NOAA
FISHERIES**

Sustainable Fisheries Branch
NMFS Beaufort Laboratory
Beaufort, NC

GSMFC Spring Meeting
Teleconference
March 4, 2019



2019 Landings for Reduction

- One factory on Atlantic coast at Reedville, VA, since 2005
- Coastwide Total Allowable Catch limit (TAC) raised (216,000 metric tons)
 - 152,392 mt allocated for reduction (prior to set-aside)
- Landings for 2019 reduction fishery:
 - 145,671 mt (or 479 million standard fish)
 - Increased 3.5% from 2018 (141,314 mt)
 - Increased 9.3% from previous 5-yr average (136,435 mt)

Vessel Participation for 2019

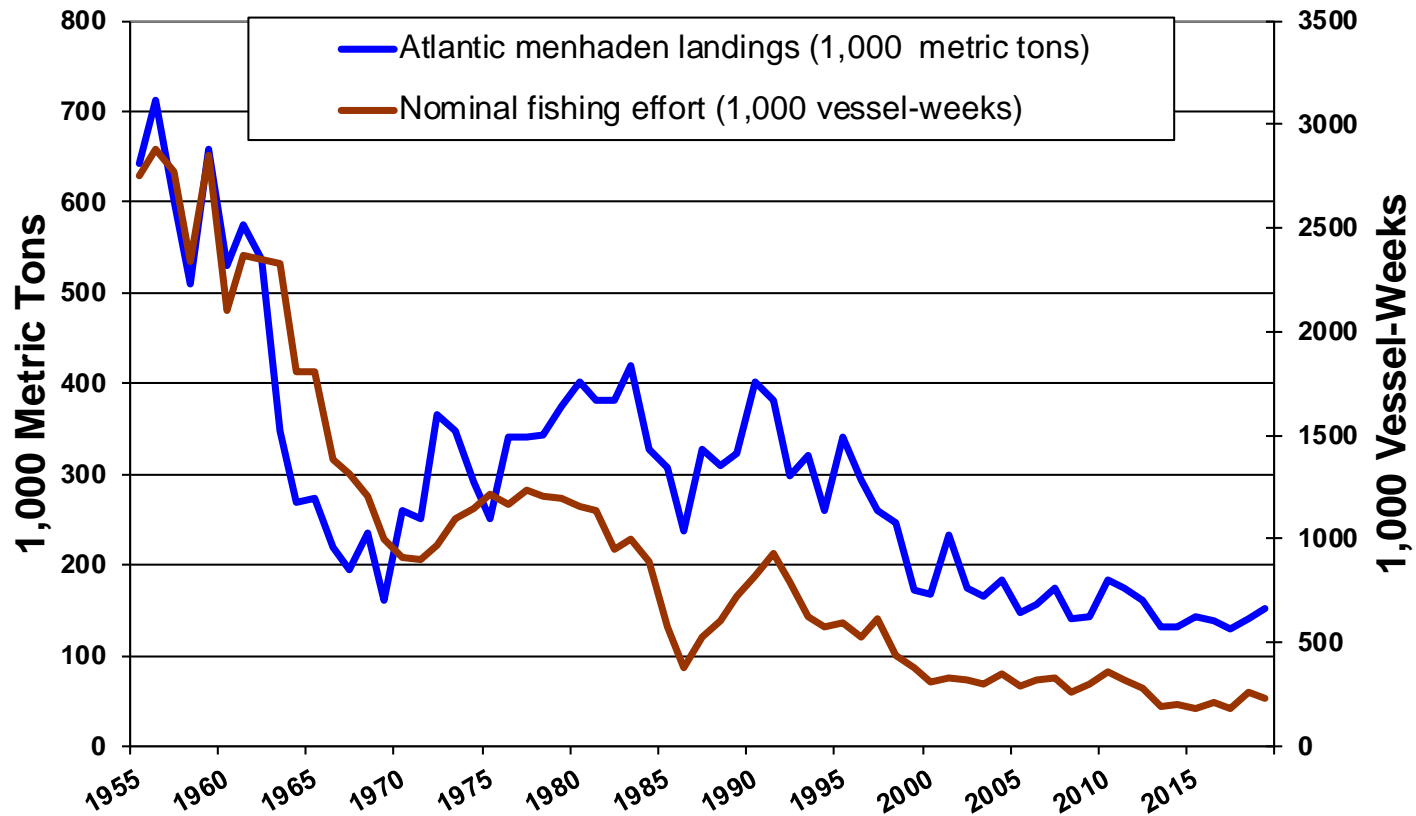
- 9 Omega Protein vessels unloaded Atlantic menhaden for reduction in 2019 at Reedville
- 1 VA 'snapper-rig' boat (bait vessel) also unloaded for reduction at Omega
 - One landed for **bait** only
- ~4 purse-seiners reported catch for **bait** in Atlantic



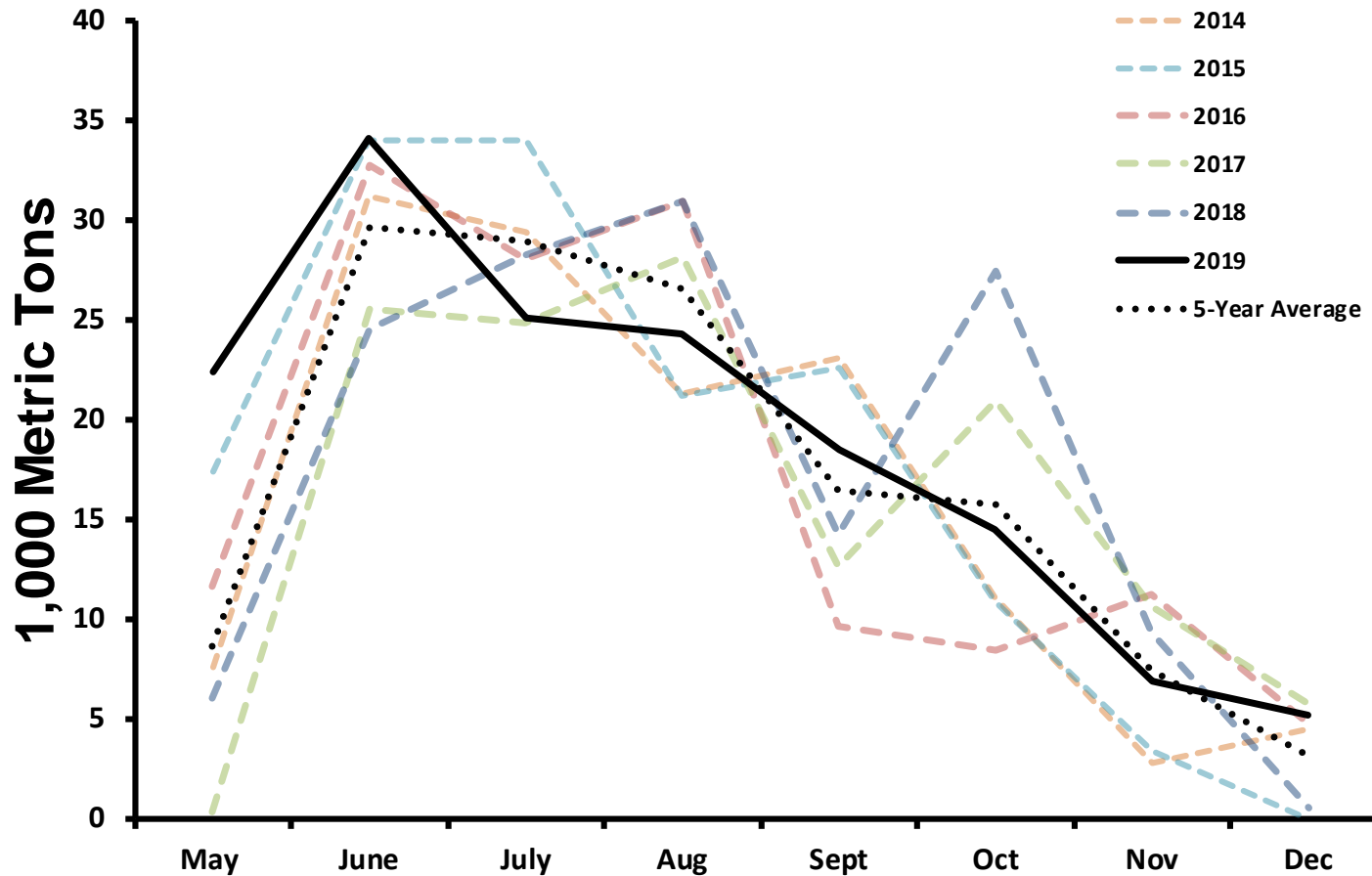
Coastwide Stock

- Fourth year in a row of large menhaden landings in Northeast
 - “Episodic Event” declared for bait fishing
- Bait fisheries
 - New York, New Jersey, Rhode Island, Massachusetts, and Maine participated in the episodic event this season
- First months of season proceeded above average
 - After June, landings remained close to the 5-year average
- Relatively few hurricanes, many late-season tropical events

Reduction Landings and Nominal Fishing Effort



2019 Landings by Month



Age Compositions in 2019 by Fishing Area

from preliminary catch-at-age matrix

- Critical equipment failure at the beginning of the 2018 fishing season
- Menhaden Program updates already underway
- Data collection complete
- Preliminary results show:
 - High agreement between methods
 - Low Average Percent Errors (APE)

Coastwide Stock

- 2014 benchmark assessment
 - Stock is not overfished and overfishing not occurring

Coastwide Stock

- 2014 benchmark assessment
 - Stock is not overfished and overfishing not occurring
- Atlantic Menhaden Management Board
 - 2012 Established an 170,800 mt coastwide Total Allowable Catch
 - 2015 increase in TAC (187,880 mt)
 - 2017 TAC increased to 200,000 mt
 - Subject to the same allocation plan as described in Amendment 2
 - 2018 TAC increased to 216,000 mt
 - Allocation adjusted from Amendment 2

Coastwide Stock

- 2014 benchmark assessment
 - Stock is not overfished and overfishing not occurring
- Atlantic Menhaden Management Board
 - 2012 Established an 170,800 mt coastwide Total Allowable Catch
 - 2015 increase in TAC (187,880 mt)
 - 2017 TAC increased to 200,000 mt
 - Subject to the same allocation plan as described in Amendment 2
 - 2018 TAC increased to 216,000 mt
 - Allocation adjusted from Amendment 2
- Amendment 3 to the Interstate Fishery Management Plan
 - Kept TAC to 216,000 mt
 - Adjusted allocation of landings

Coastwide Stock

- 2014 benchmark assessment
 - Stock is not overfished and overfishing not occurring
- Atlantic Menhaden Management Board
 - 2012 Established an 170,800 mt coastwide Total Allowable Catch
 - 2015 increase in TAC (187,880 mt)
 - 2017 TAC increased to 200,000 mt
 - Subject to the same allocation plan as described in Amendment 2
 - 2018 TAC increased to 216,000 mt
 - Allocation adjusted from Amendment 2
- Amendment 3 to the Interstate Fishery Management Plan
 - Kept TAC to 216,000 mt
 - Adjusted allocation of landings
- 2019 benchmark assessment
 - Single-species stock assessment passed peer review
 - Multi-species stock assessment also passed

2019 Atlantic Menhaden TAC, by allocation unit

Unit	Percent of TAC	2019 (1,000 Metric Tons)
ME	0.5%	1,106
NH	0.5%	1,069
MA	1.3%	2,725
RI	0.5%	1,107
CT	0.5%	1,103
NY	0.7%	1,477
NJ	10.9%	23,250
PA	0.5%	1,069
DE	0.5%	1,096
MD	1.9%	4,038
PRFC	1.1%	2,295
VA (Reduction)	70.8%	151,392
VA (Bait)	7.9%	16,821
NC	1.0%	2,044
SC	0.5%	1,069
GA	0.5%	1,069
FL	0.5%	1,108
Total		213,840*

* Does not include the 1% episodic set-aside