



# Update on the 2019 Atlantic Menhaden Fishery

**NOAA**  
**FISHERIES**

Sustainable Fisheries Branch  
NMFS Beaufort Laboratory  
Beaufort, NC



GSMFC - Fall Meeting  
October 15, 2019  
Biloxi, MS

# 2019 Landings for Reduction

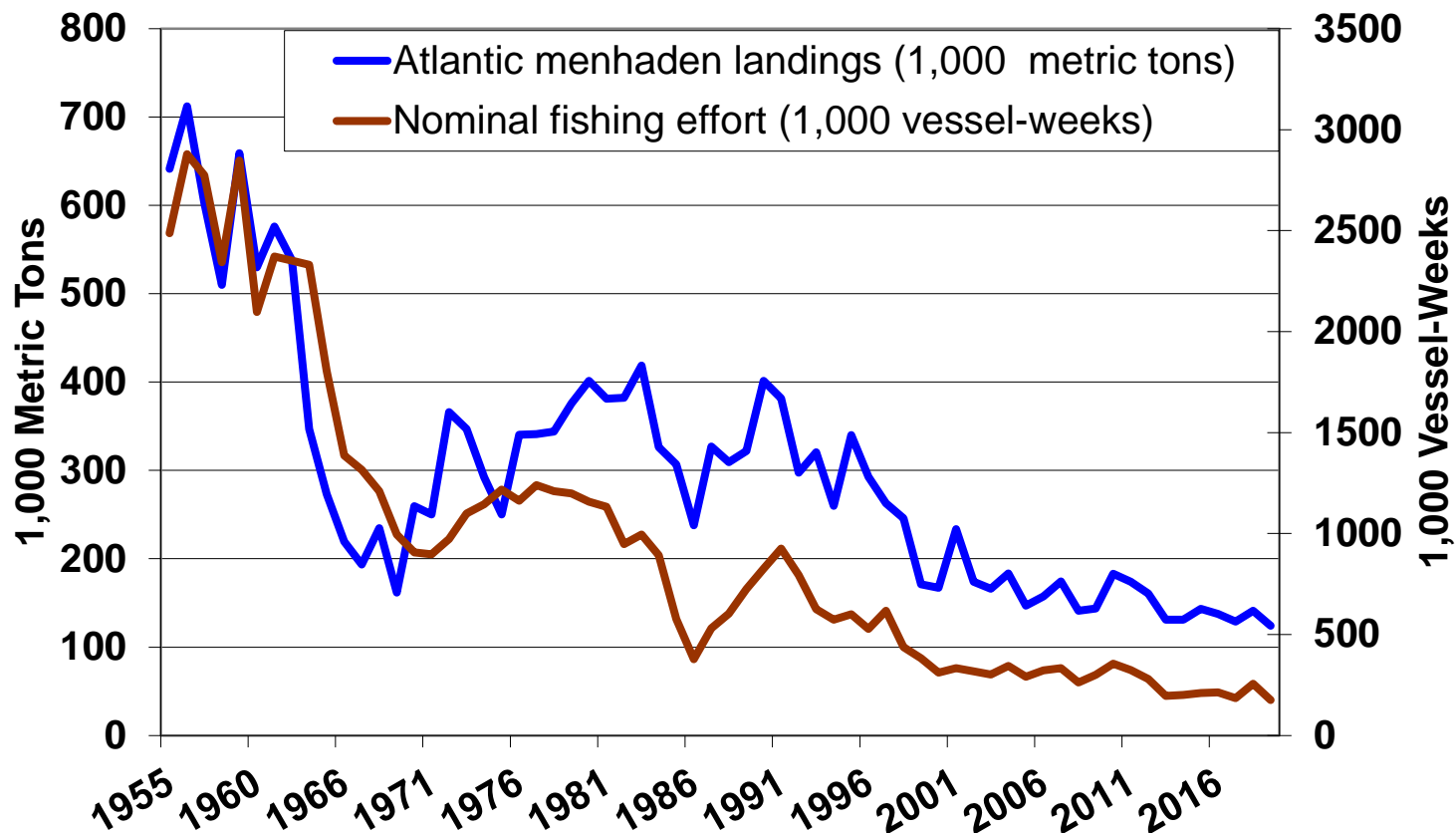
- One fish factory on Atlantic coast at Reedville, VA, since 2005
- As last year, 2019 landings for reduction constrained by the coastwide TAC
  - TAC remained at 216,000 mt for 2019 (165,941 mt for reduction)
- Through September 30
  - 124,356 metric tons (or 409 million standard fish)
  - Increased 19.6% from 2018 (104,006 mt)
  - increased 13% from previous 5-yr average (110,080 mt)

# Vessel Participation in 2019

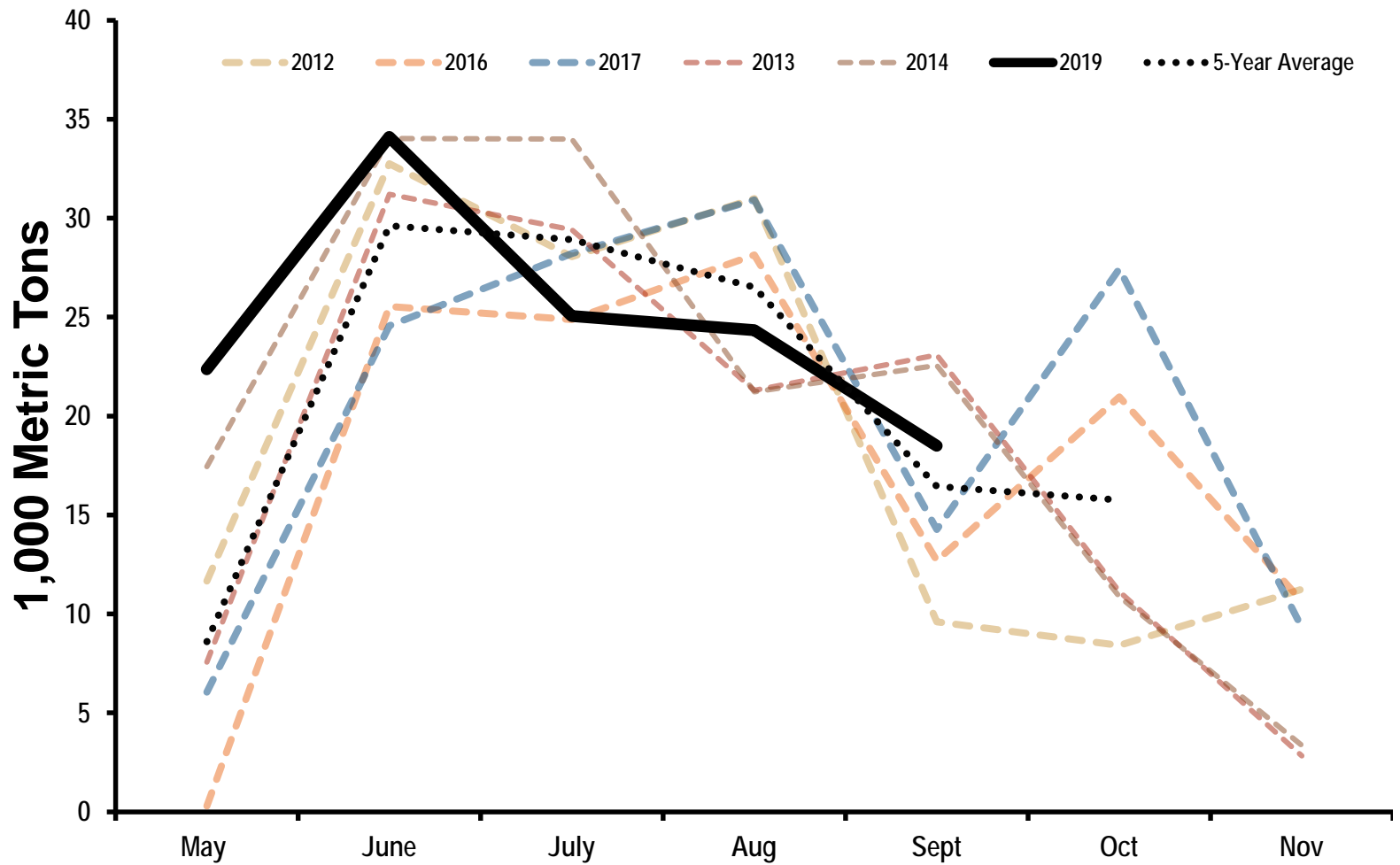
- 7 Omega Protein vessels unloaded Atlantic menhaden for reduction in 2019 at Reedville
- 1 VA 'snapper' boat (bait vessel) also unloaded minor quantities for reduction at Omega
  - One landed for **bait** only
- ~4 purse-seiners reported landings for **bait** in Atlantic



# Reduction Landings and Nominal Fishing Effort



# Reduction Landings by Month



# Coastwide Stock

- Bait Closures
  - Maine Episodic Event Fishery: Closed July 28<sup>th</sup>
    - Incidental take allowed (6,000-lb limit)
  - Massachusetts: Open
  - Rhode Island: Limited (120,000 pounds)
    - Incidental take allowed (6,000-lb limit)
  - New York: Limited July 9 (40,000 pounds)
  - New Jersey: Closed July 30, reopened August 5

# 2018 Atlantic Menhaden TAC, by allocation unit

Unit	Percent of TAC	1,000 Metric Tons
ME	0.04%	85
NH	<0.01%	0.06
MA	0.8%	1,811
RI	0.02%	39
CT	0.02%	38
NY	0.06%	120
NJ	11%	24,174
DE	0.01%	28
MD	1.4%	2,965
Potomac River	0.6%	1,341
VA (Reduction)	77%	165,941
VA (Bait)	8.5%	18,356
NC	0.5%	1,064
SC	-	-
GA	-	-
FL	0.02%	39
<b>Total</b>		<b>216,000*</b>

\* Does not include the 1% episodic set-aside

# Atlantic menhaden assessment

- Report for single species assessment submitted for review and ERP (ecological reference point) report to be submitted shortly
- Review Workshop: Nov 4-8 in Charleston
- Recommending the use of the single species assessment in conjunction with a preferred method from the ERP suite



# Questions?