



Update on the 2018 Atlantic Menhaden Fishing Season

NOAA FISHERIES

Sustainable Fisheries Branch
NMFS Beaufort Laboratory
Beaufort, NC

GSMFC Spring Meeting
New Orleans, LA
March 18, 2019



2018 Landings for Reduction

- One factory on Atlantic coast at Reedville, VA, since 2005
- Coastwide Total Allowable Catch limit (TAC) raised (216,000 metric tons)
 - 152,392 mt allocated for reduction (prior to set-aside)
- Landings for 2018 reduction fishery:
 - 141,314 mt (or 465 million standard fish)
 - Increased 9.6% from 2017 (128,923 mt)
 - Increased 5.2% from previous 5-yr average (134,378 mt)

Vessel Participation for 2018

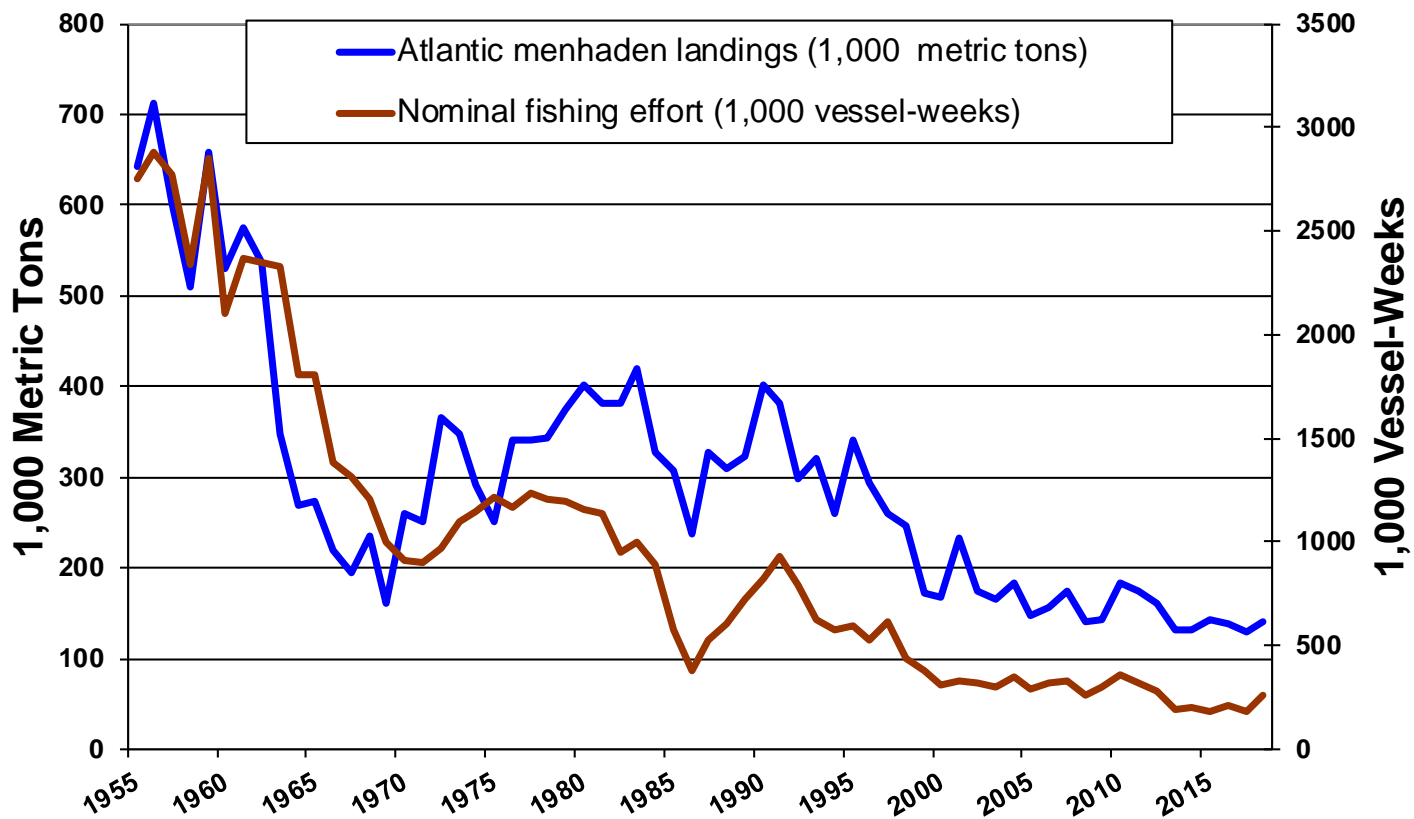
- 8 Omega Protein vessels unloaded Atlantic menhaden for reduction in 2018 at Reedville
- 1 VA 'snapper-rig' boat (bait vessel) also unloaded for reduction at Omega
 - One landed for **bait** only
- ~4 purse-seiners reported catch for **bait** in Atlantic



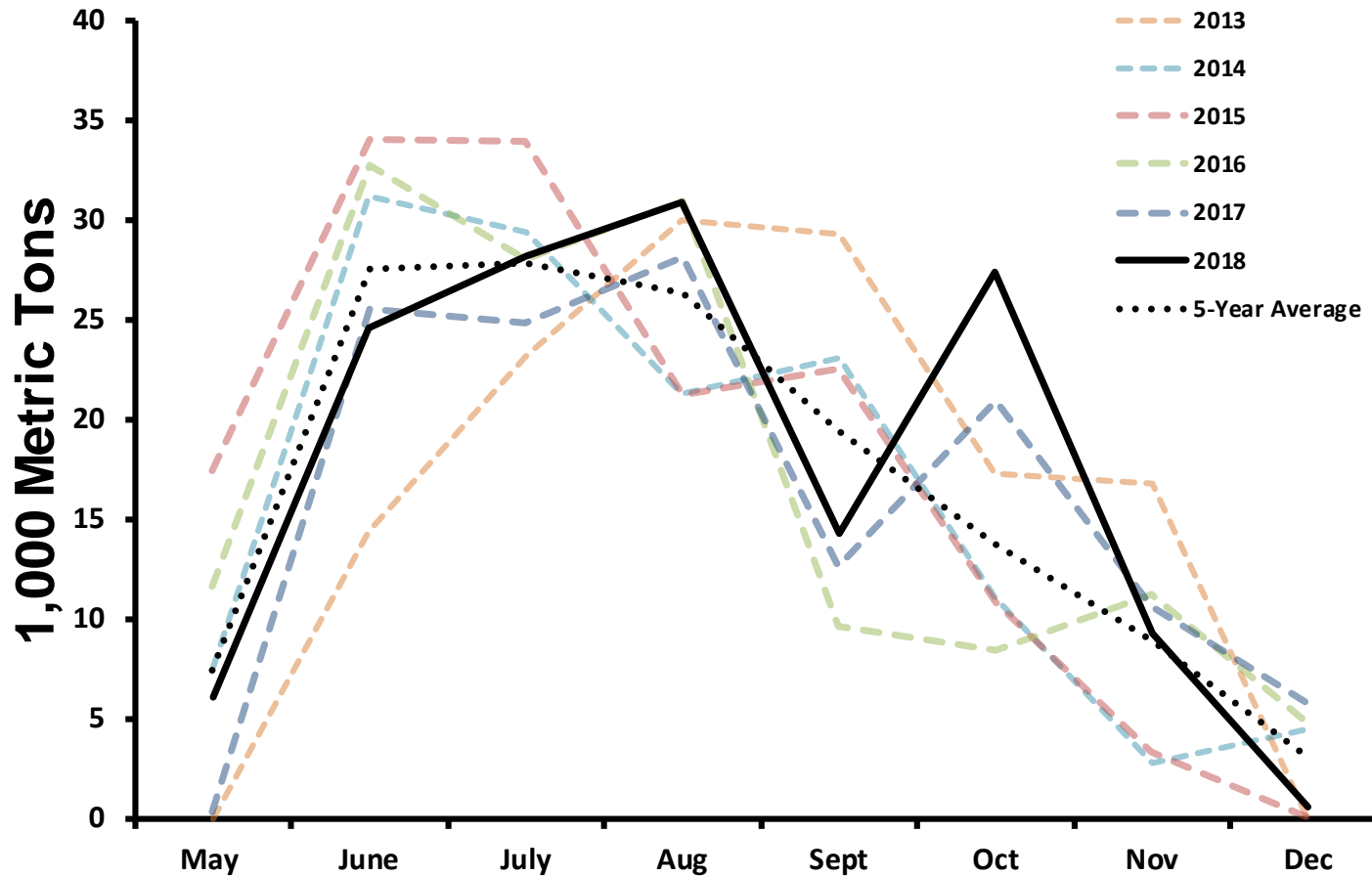
Coastwide Stock

- Third year in a row of large menhaden landings in Northeast
 - “Episodic Event” declared for bait fishing
- Bait fisheries
 - New York, New Jersey, Rhode Island, Massachusetts, and Maine participated in the episodic event this season
- First half of season proceeded about average
- Hurricane Florence disrupted fishing in mid-September
 - Weather affected fishing in November-December

Reduction Landings and Nominal Fishing Effort



2018 Landings by Month



Age Compositions in 2018 by Fishing Area

from preliminary catch-at-age matrix

- Critical equipment failure at the beginning of the 2018 fishing season
- Menhaden Program updates already underway
- Data collection complete
- Preliminary results show:
 - High agreement between methods
 - Low Average Percent Errors (APE)

Coastwide Stock

- 2014 benchmark assessment
 - Stock is not overfished and overfishing not occurring

Coastwide Stock

- 2014 benchmark assessment
 - Stock is not overfished and overfishing not occurring
- Atlantic Menhaden Management Board
 - 2012 Established an 170,800 mt coastwide Total Allowable Catch
 - 2015 increase in TAC (187,880 mt)
 - 2017 TAC increased to 200,000 mt
 - Subject to the same allocation plan as described in Amendment 2
 - 2018 TAC increased to 216,000 mt
 - Allocation adjusted from Amendment 2

Coastwide Stock

- 2014 benchmark assessment
 - Stock is not overfished and overfishing not occurring
- Atlantic Menhaden Management Board
 - 2012 Established an 170,800 mt coastwide Total Allowable Catch
 - 2015 increase in TAC (187,880 mt)
 - 2017 TAC increased to (200,000 mt)
 - Subject to the same allocation plan as described in Amendment 2
 - 2018 TAC increased to 216,000 mt
 - Allocation adjusted from Amendment 2
- Amendment 3 to the Interstate Fishery Management Plan
 - Kept TAC to 216,000 mt
 - Adjusted allocation of landings

2019 Atlantic Menhaden TAC, by allocation unit

Unit	Percent of TAC	2019 (1,000 Metric Tons)
ME	0.5%	1,106
NH	0.5%	1,069
MA	1.3%	2,725
RI	0.5%	1,107
CT	0.5%	1,103
NY	0.7%	1,477
NJ	10.9%	23,250
PA	0.5%	1,069
DE	0.5%	1,096
MD	1.9%	4,038
PRFC	1.1%	2,295
VA (Reduction)	70.8%	151,392
VA (Bait)	7.9%	16,821
NC	1.0%	2,044
SC	0.5%	1,069
GA	0.5%	1,069
FL	0.5%	1,108
Total		213,840*

* Does not include the 1% episodic set-aside