



NOAA
FISHERIES



Southeast For-Hire Integrated Electronic Reporting

Gulf Commission Meeting
Southeast Regional Office
March 2019

Background

- All federal Gulf of Mexico for-hire permit holders will be required to submit electronic logbooks
 - Additional requirements include a hail-out notification and a permanently affixed location device
- Anticipated benefits:
 - Census based reporting
 - Increased accuracy of data
 - Reduction in recall bias
 - Near real time access to preliminary data



Requirements

- Declare a fishing trip before leaving port (hail-out)
 - Estimates expected time back and landing location
- Land at approved landing locations
- Submit logbook report prior to offloading fish
- Location positioning device must be permanently affixed and turned on at all times
 - Two options: VMS unit or approved archival unit
 - Power-down exemptions allow for unit to be turned off (min. length is 72 hours)



Implementation

- Brought together relevant stakeholders early in the process
 - 50+ people from Councils, FINs, Commissions, and NMFS
- Invited speakers to talk about similar projects
- Identified core topics and created subgroups
 - Data housing
 - Survey Design
 - Minimum Standards (data transmission needs)
 - Compliance and Enforcement
 - Outreach and Educations
 - Program Management and Budget
- Quality Management workshop to improve the process and involve stakeholder representatives



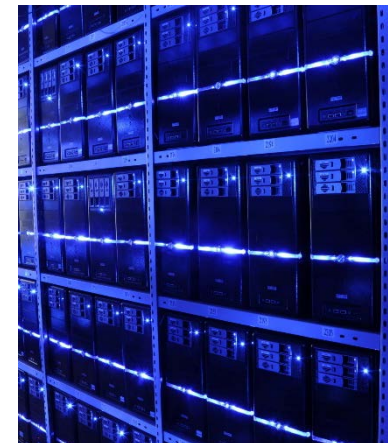
Current Status for Gulf Program

- Final Rule ~ June or July
- Implementation Dates
 - Phase 1: Logbook and hail-out requirement ~ August 15
 - Phase 2: Location technology ~ October 1
- Potential logbook and hail-out vendors
 - ACCSP's eTrips and eTrips Mobile
 - Bluefin Data's VESL
 - VMS vendors
- Potential location devices
 - VMS vendors
 - Archival GPS units undergoing testing (~5 vendors)

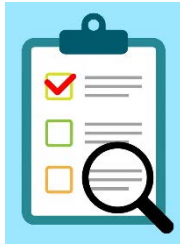


Implementation to date: Data Collection

- Selected ACCSP as the data repository and first receiver
 - Chosen for flexibility of design, back-up procedures, and ability to integrate data from regions and states
- Working with ACCSP, SERO, & SEFSC to coordinate data sharing
 - ACCSP needs to finish FISMA process before connection to SERO
 - Short-term fixes allow us to move forward for now
- Still need to consider:
 - Data sharing while preserving confidentiality of data



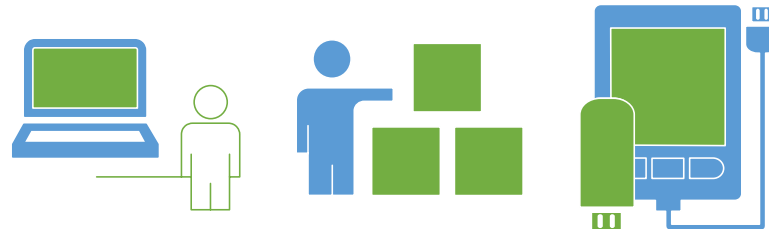
Implementation to date: Survey design



- Data elements for logbook and hail-out completed
 - Logbook data is consistent with South Atlantic requirements in order to reduce the need for duplicative reporting
 - ACCSP working on methods to reduce duplicative reporting with mid-Atlantic
 - May not be applicable to VMS method to report
- Still need to create processes to:
 - Validate the data (budget/resources constrained)
 - Calibrate data received (validation first needed)
 - Integration with existing or future programs (resource constrained)

Implementation to date: Minimum standards

- Finalizing API standards for logbook and hail-out
- Testing archival GPS units (4-5 vendors)
- Specifications for VMS units nearly complete
- Still need to complete:
 - Developing type approval process for archival GPS units
 - Developing procedures to monitor archival GPS units
 - Developing procedures for power-down exemptions (aGPS and VMS)



Implementation to date: Compliance & Enforcement

- Testing positioning location devices used to aid compliance
- Working with SEFSC to mimic procedures used in commercial fishery (e.g., logbook submissions required prior to permit renewal)
- Developing monitoring functions of archival GPS and VMS units
- Still need to complete:
 - Methods for OLE communication
 - Methods for Permits access



Implementation to date: Outreach and Education

- Preliminary outreach has begun
 - Good attendance
 - Limited as other decisions are still being made
- Development of outreach materials
- More detailed outreach session close to implementation
- Coming soon, outreach sessions geared towards:
 - Port samplers (state and federal)
 - Enforcement
 - State partners



Implementation to date: Program Management

- Limited funding available for program management
- Websites under construction
- Documents:
 - Development Plan – Phase 1 document being finalized
 - Quality Management workshop document being finalized
- Staffing Needs
 - GPS and VMS monitoring (~1 tech to 300-500 vessels)
 - Data management (e.g., QA/QC, query development)
 - System management (e.g., IT)
 - Customer service (e.g., 1-800 #, interactive website)
 - Dockside Validation (e.g., survey design, biological samples)
 - Enforcement

Key Discussions

- Keys discussions from QM workshop
 - Scalability
 - Validation and Compliance
 - Calibration
 - Data Usage
 - Data Integration



- **Scalability**

- Headboat survey has 1 port agent:10 vessels
 - Impracticable for ~1,300 vessel and wide geographic range
- Use technology aspects to replace people
 - Hail-out - notifies OLE and port agents of trips
 - Position location – Verifies vessel was out fishing

Key Discussions

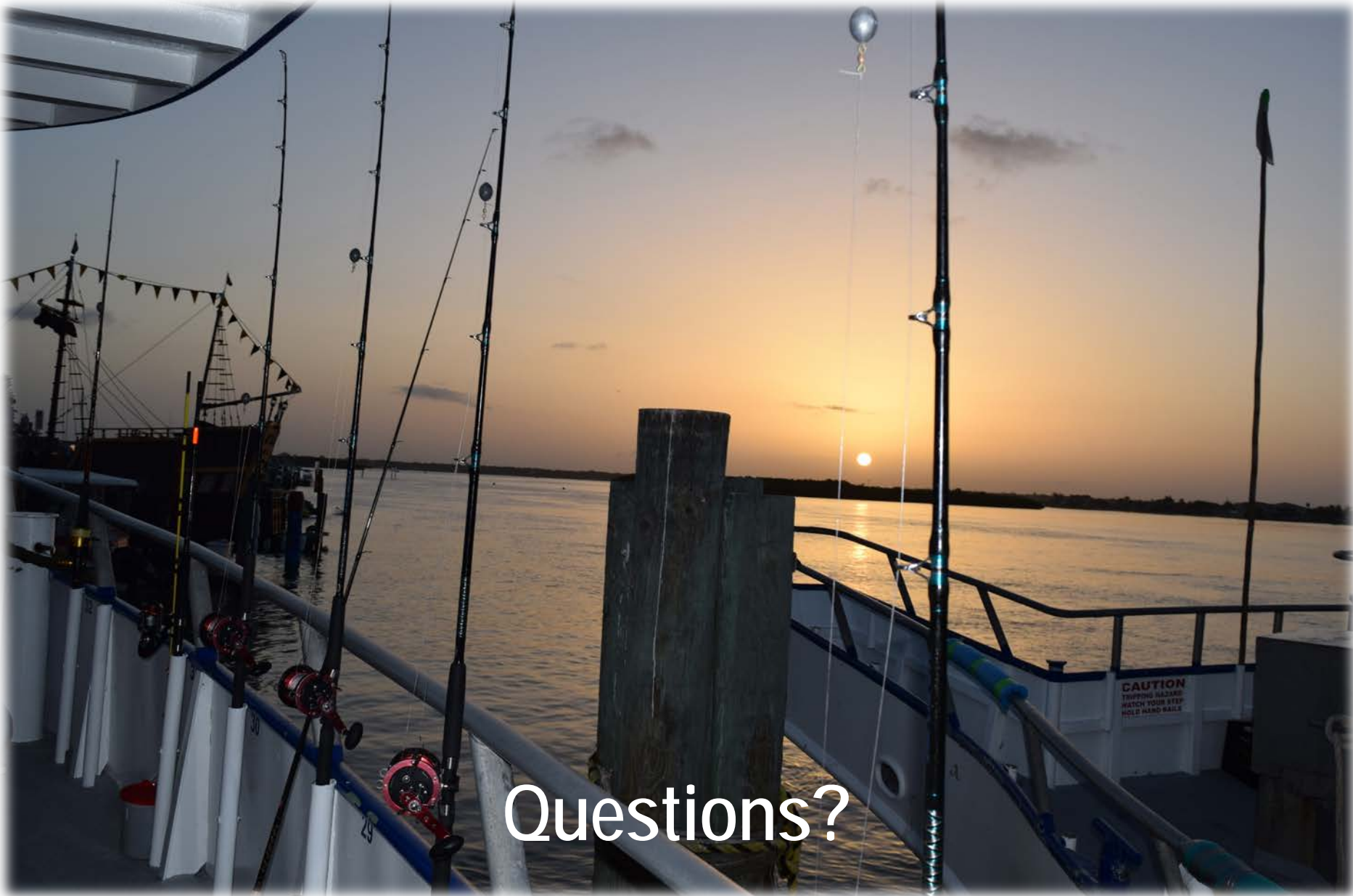
- **Validation and Compliance**
 - Hail-out and report prior to offload
 - Expect to use capture/recapture statistical design
 - Used to estimate misreported or unreported trips
 - Currently no funding available at this point in time
 - Validation must be in place before Calibration measures
- **Calibration**
 - Tells if difference are due to the system or actual changes
 - Creates a conversion factor among data sets
 - Best done in side-by-side comparisons for multiple years

Key Discussions

- Data Usage
 - Used to validate minimum estimates of for-hire fishing effort
 - Long-term (after validation, side-by-side comparison and calibration)
 - Part of broader effort to produce final estimates of total catch and effort
 - Potential use in in-season management, stock assessments, and management changes (e.g., amendment analyses)

Key Discussions

- Data Integration
 - Data integration with South Atlantic and GARFO through ACCSP efforts
 - Future:
 - Data integration with state partners
 - Data integration with HMS
 - Applying ACCSP's Trip Management System for unique identifiers



Questions?