

Lysiosquilla scabricauda (Lamarck, 1818)

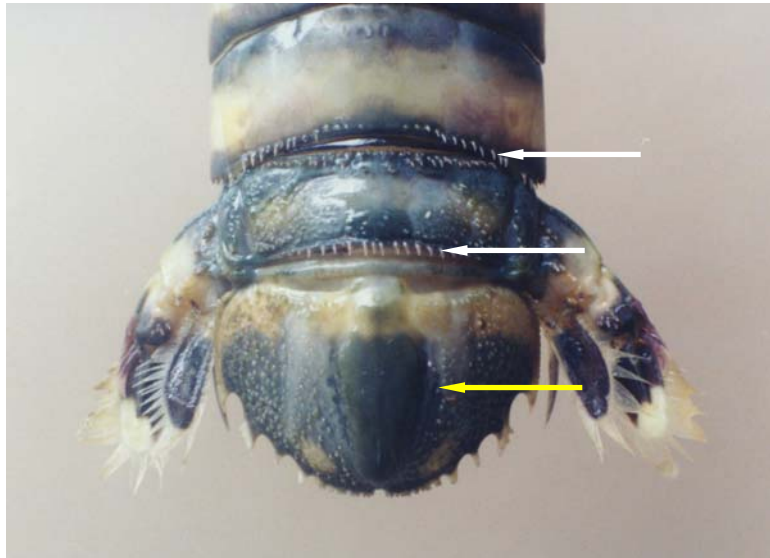
Order Stomatopoda
Family Lysiosquillidae

References used: Manning (1969)

Diagnostic characters: Telson lacking sharp median carina; fifth abdominal somite with posterior spinules; sixth abdominal somite and telson with numerous spinules and tubercles, in males the telson is relatively smooth; dactylus of raptorial claw with 8-11 teeth, usually 9-10; eyes very large and T-shaped, cornea bi-lobed. *L. scabricauda* can be separated from other western Atlantic species of *Lysiosquilla* by the large number of teeth on the dactylus of the raptorial claw. **All *Lysiosquilla* species are conspicuously banded with dark pigment.**

Habitat: Coastal/shelf species

Range: Both sides of the Atlantic; the Gulf of Mexico through the Caribbean to Brazil.



White arrows: Margin of abdominal segments 5 and 6 armed with spines.

Yellow arrow: Telson broader than long with faintly raised median boss.