

Solenocera atlantis Burkenroad, 1939
Dwarf Humpback Shrimp

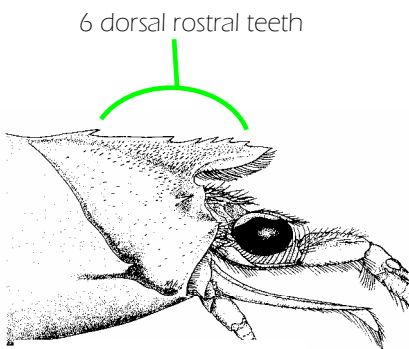
Order Decapoda
Suborder Dendrobranchiata
Family Solenoceridae

References used: Perez Farfante and Kensley (1997), Williams (1984)

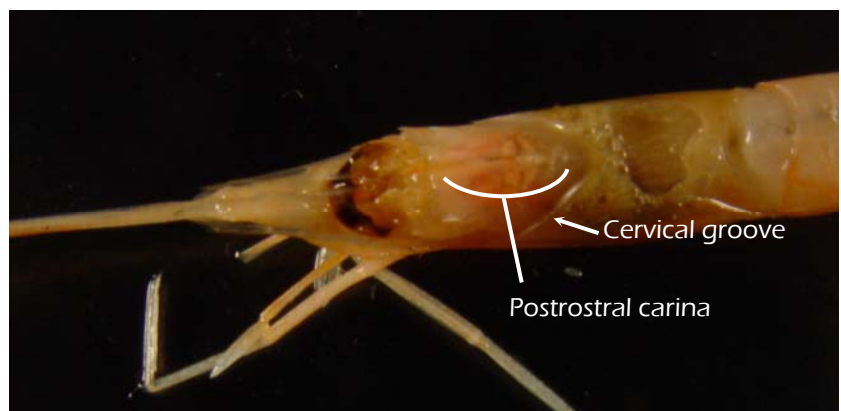
Diagnostic characters: Rostrum short, horizontal or slightly uplifted, armed dorsally with 5 to 7, usually 6 teeth; postrostral carina not continuous beyond cervical groove; pale orange in color interspersed with many translucent areas; pigment concentrated on rostrum and antennules and as bands across posterior parts of abdominal terga; anterior part of carapace setose (if glossy, then *S. necopina*).

Habitat: Found on mud, mud /sand, shell and coral bottoms from 16 to 232 m, usually less than 75 m.

Range: North Carolina to Florida; Gulf of Mexico; West Indies; Caribbean coast of Central and South America to Brazil.



From Williams (1984)



Solenocera vioscai Burkenroad, 1934
Humpback Shrimp

Order Decapoda
Suborder Dendrobranchiata
Family Solenoceridae

References used: Williams (1984)

Diagnostic characters: Rostrum short, horizontal or slightly uplifted, armed dorsally with 8 to 11, usually 9 teeth; postrostral carina high (ridge running from rostrum to edge of carapace), extending almost to posterior margin of carapace; pale orange in color interspersed with many translucent areas; pigment concentrated on rostrum and antennules and as bands across posterior parts of abdominal terga; patches of opaque white on outer sides of legs and pleopods, on uropods and fifth abdominal segment.

Habitat: Found on mud, mud /sand and shell bottoms from 37 to 239 m, usually 50 to 80 m.

Range: North Carolina to Dry Tortugas, Florida; northern and western Gulf of Mexico to Tabasco.

