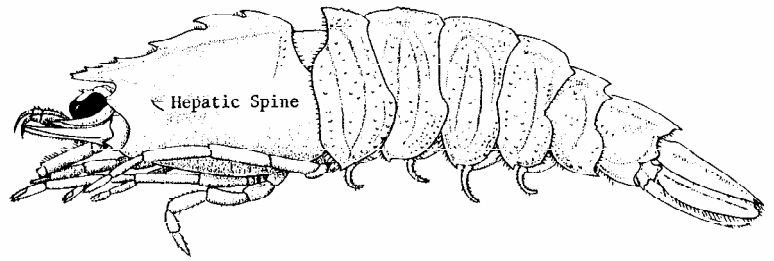
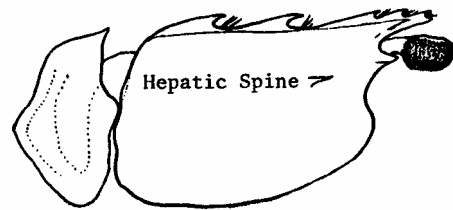


SICYONIA

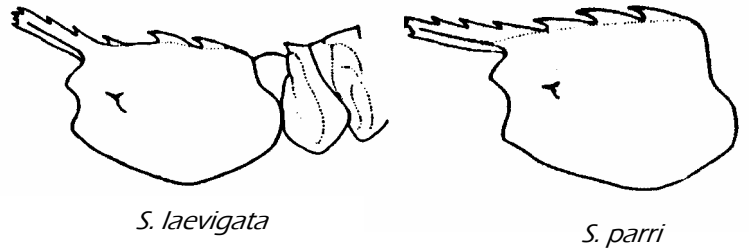
3 teeth behind hepatic spine - *S. brevirostris*



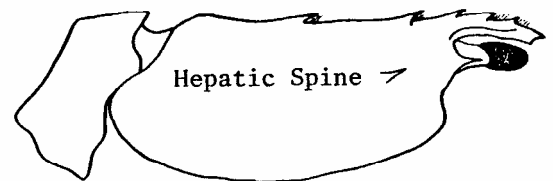
2 teeth behind hepatic spine, none even with hepatic spine - *S. typica*



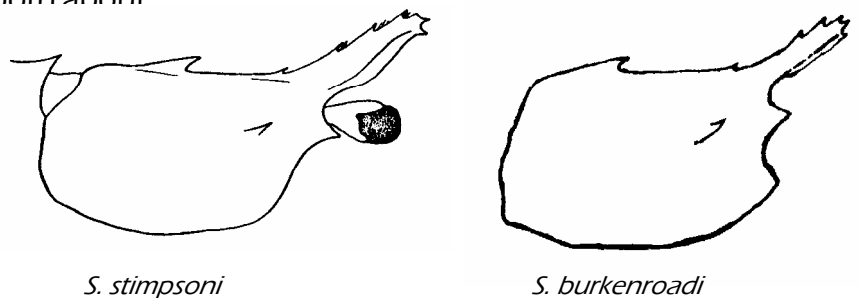
2 teeth behind hepatic spine, 1 tooth even with hepatic spine - *S. laevigata*, *S. parri*



1 tooth behind hepatic spine/1 large tooth even with hepatic spine - *S. dorsalis*



1 tooth behind hepatic spine/1 small tooth about even with or anterior to the level of spine - *S. stimpsoni*, *S. burkenroadi*



Sicyonia brevirostris Stimpson, 1871
Brown Rock Shrimp

Order Decapoda
Suborder Dendrobranchiata
Family Sicyoniidae

References used: Williams (1984)

Diagnostic characters: Rostrum variously curved dorsally, slender, narrowing considerably to tip, armed dorsally with 2, sometimes 3, subequal teeth not counting tip; postrostral carina high with 4, occasionally 3, teeth; 3 large teeth behind hepatic spine.

Habitat: Shallow water to 329 m; most frequent on sand and shell-sand bottoms of continental shelf.

Range: Virginia through Bahamas to Cuba; Gulf of Mexico.



Sicyonia burkenroadi Cobb, 1971
Spiny Rock Shrimp

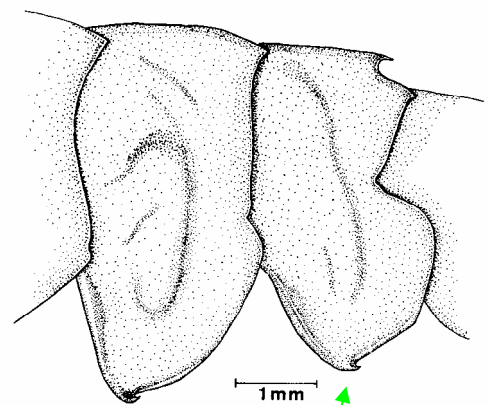
Order Decapoda
Suborder Dendrobranchiata
Family Sicyoniidae

References used: Williams (1984), Huff and Cobb (1979)

Diagnostic characters: Rostrum horizontal in males, slightly elevated or deflexed; in females elevated as much as 45°, rarely horizontal; armed dorsally with 3, rarely 4, subequal teeth not counting tip; postrostral carina with 1 tooth about even with or anterior to level of hepatic spine, larger tooth posterior to hepatic spine; carapace with crimson spot edged with yellow; curved spine on the first four abdominal pleura, *S. stimpsoni* identical except lacking spines. Please return all *S. stimpsoni* to the laboratory for species verification.

Habitat: Mud, mud-sand or mud-shell bottoms from 33 to 118 m, occasionally deeper.

Range: North Carolina through Gulf of Mexico to Brazil.



Abdominal pleura with curved spines
(From Huff and Cobb 1979)

Sicyonia dorsalis Kingsley, 1878
Lesser Rock Shrimp

Order Decapoda
Suborder Dendrobranchiata
Family Sicyoniidae

References used: Williams (1984)

Diagnostic characters: Rostrum extending horizontally or decurved variable distance beyond eye, armed dorsally with 3 teeth not counting tip; postrostral carina with 2 teeth, anterior tooth about even with or just anterior to level of hepatic spine, posterior tooth near midlength of postrostral carapace; dark maroon stripe on abdominal segments 3 and 4.

Habitat: Shallow water to 60 m, rarely 420 m; mud and mud/shell bottoms.

Range: North Carolina to Texas; Colombia to French Guiana; Brazil.



Sicyonia laevigata Stimpson, 1871

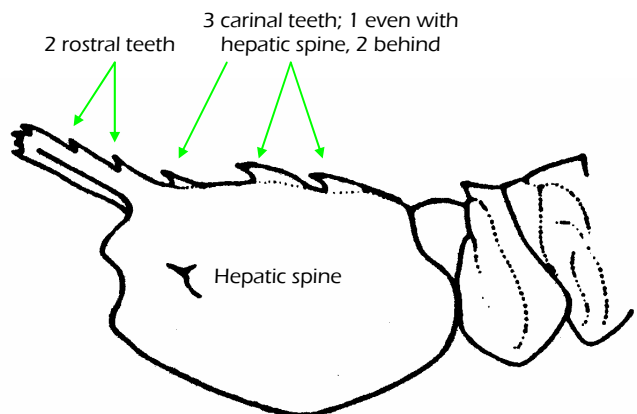
Order Decapoda
Suborder Dendrobranchiata
Family Sicyoniidae

References used: Williams (1984)

Diagnostic characters: Rostrum with two dorsal teeth (excluding tip) anterior to posterior orbital margin; rostrum elevated at angle of approximately 20° but angle may vary with age; rostrum about half as long as carapace; carina of carapace armed dorsally with three teeth, two behind hepatic spine and one approximately even with hepatic spine; similar to *S. parri* (species can be separated by the number of teeth (excluding tip) on the rostrum, there are three in *S. parri*, two in *S. laevigata*).

Habitat: Shallow water to 100 meters, shelly bottoms.

Range: North Carolina; Gulf of Mexico; West Indies to Brazil; Pacific Coast of Panama.



Sicyonia parri (Burkenroad, 1934)

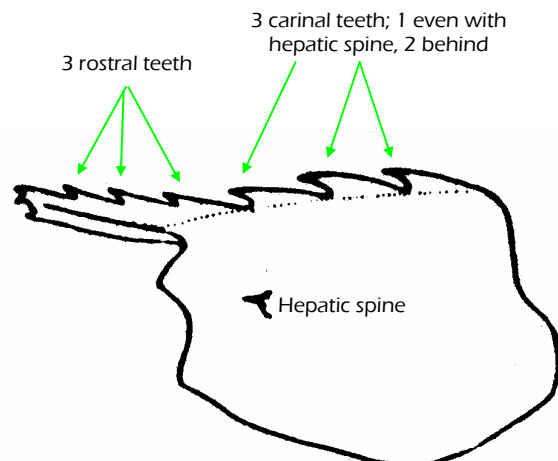
Order Decapoda
Suborder Dendrobranchiata
Family Sicyoniidae

References used: Williams (1984)

Diagnostic characters: Rostrum elevated at angle of approximately 15°, armed dorsally with 3 teeth not counting tip; prothrostral carina with 3 large, subequal, almost equidistant teeth, anterior one approximately at level of hepatic spine, similar to *S. laevigata* (species can be separated by the number of teeth (excluding tip) on the rostrum, there are three in *S. parri*, two in *S. laevigata*).

Habitat: Shallow water to 83 m, sand bottoms.

Range: North Carolina; Gulf of Mexico; West Indies to Brazil.



Sicyonia typica (Boeck, 1864)
Kinglet Rock Shrimp

Order Decapoda
Suborder Dendrobranchiata
Family Sicyoniidae

References used: Williams (1984)

Diagnostic characters: Rostrum extending halfway along eye, directed obliquely upward, armed dorsally with 1 or 2 small teeth not counting tip; postrostral carina with 2 or 3 teeth, last 2 posterior to level of hepatic spine (third tooth, if present, may look like part of rostral series); **blue spots on tail prominent in fresh specimens.**

Habitat: Shallow water to 101 m.

Range: North Carolina through the Gulf of Mexico; Cuba through the West Indies to Brazil.



Blue on uropods



Antenna blue striped