

*Pleoticus robustus* (Smith, 1885)  
= *Hymenopenaeus robustus*  
Royal Red Shrimp

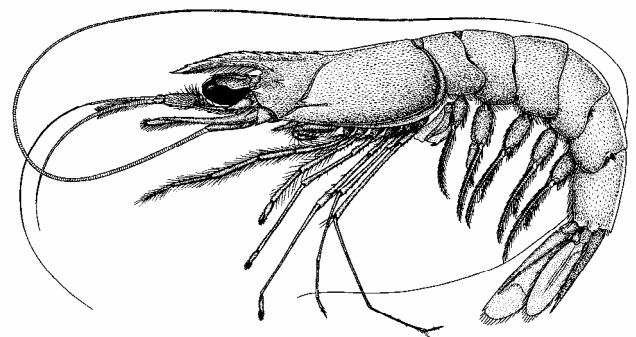
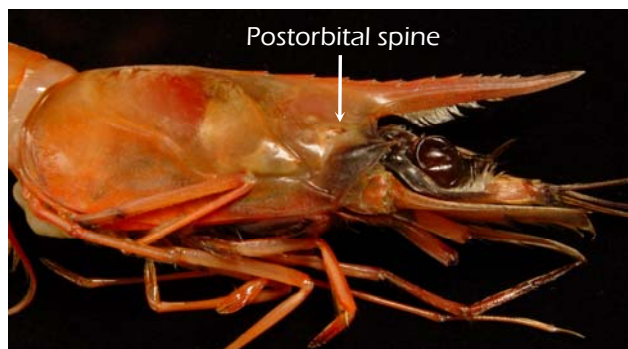
Order Decapoda  
Suborder Dendrobranchiata  
Family Solenoceridae

References used: Perez Farfante and Kensley (1997), NMFS EFH Management Plan

**Diagnostic characters:** Body robust, integument thick and firm; rostrum armed with dorsal teeth only, carapace moderately long; orbital, **postorbital**, antennal, and hepatic spines present; telson armed with pair of conspicuous, fixed, subapical spines.

**Habitat:** Found over blue/black mud, sand, muddy sand, or white calcareous mud; 180 to 730 m.

**Range:** Massachusetts to Gulf of Mexico, Caribbean to French Guiana.



From Perez Farfante & Kensley 1997