

*Penaeopsis serrata* Bate, 1881  
Pinkspeckled Shrimp

Order Decapoda  
Suborder Dendrobranchiata  
Family Penaeidae

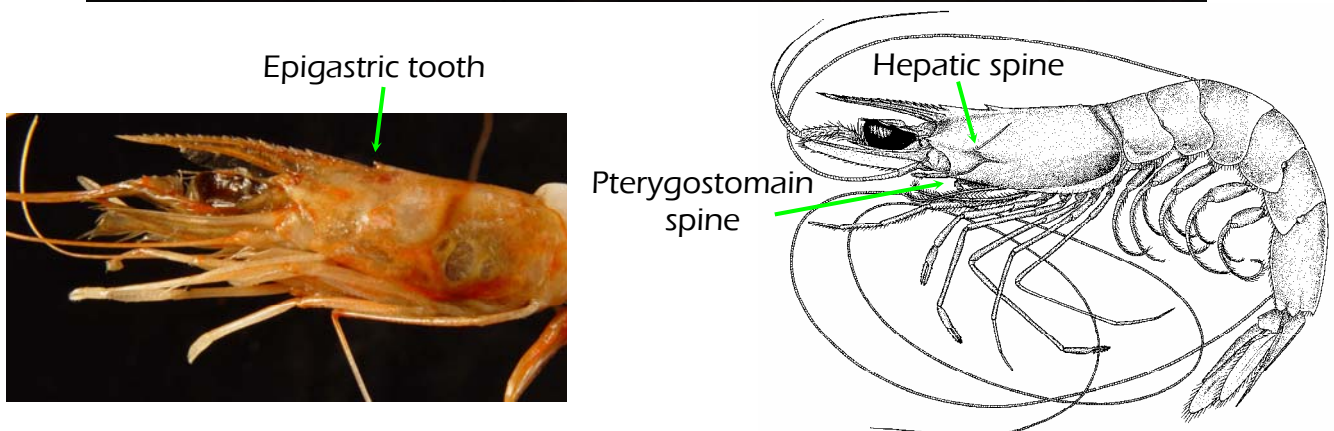
References used: Abele and Kim (1986), Perez Farfante and and Kensley (1997)

**Diagnostic characters:** Rostrum with teeth on dorsal margin only; epigastric tooth separated from first rostral tooth; hepatic sulcus with anterior part accompanied by sharp carina and descending from hepatic spine then turning toward and reaching pterygostomian spine; telson tridentate, fixed spine on each side of tip preceded by several small pairs of movable spines; petasma of male symmetrical, semienclosed.

**Habitat:**

**Range:** New Jersey to Gulf of Mexico; Caribbean Sea to southern Brazil; eastern North Atlantic Ocean.

**Remarks:** Distinguished from *Parapenaeus* by lack of transverse and longitudinal sutures on carapace.



From Perez Farfante and and Kensley (1997)