

*Mesopenaeus tropicalis* (Bouvier, 1905)  
Salmon Shrimp

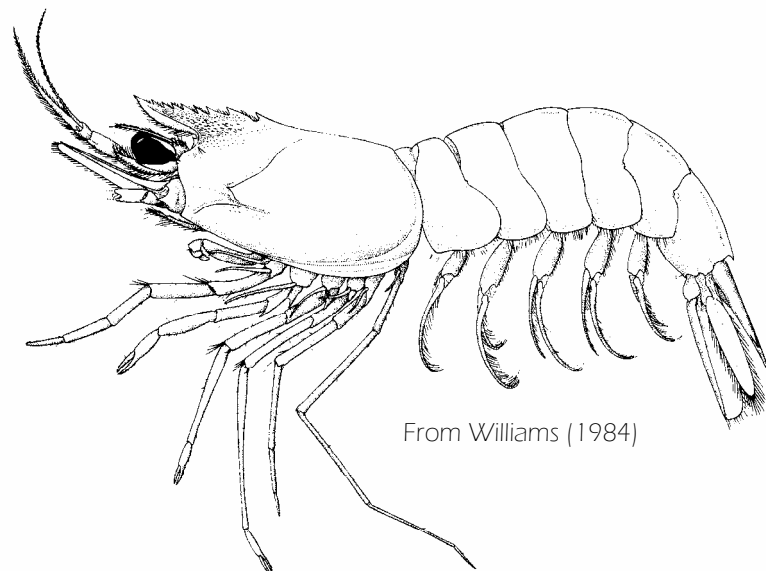
Order Decapoda  
Suborder Dendrobranchiata  
Family Solenoceridae

References used: Perez Farfante and Kensley (1997), Williams (1984)

**Diagnostic characters:** Similar to *Solenocera*, **antennular flagella shorter than in *Solenocera***, rostrum short, straight or slightly upturned at tip, reaching to edge of eye, armed dorsally with 7 to 10 teeth; body translucent salmon, vertical deep yellow stripes, milky white patches on carapace.

**Habitat:** Continental shelf to shelf edge, infrequent in shallow water; 11 to 915 m.

**Range:** North Carolina through Florida Straights to Alabama; Bahamas through Caribbean Sea to Brazil.



From Williams (1984)