

Raninoides loevis (Latreille, 1825)
Furrowed Frog Crab

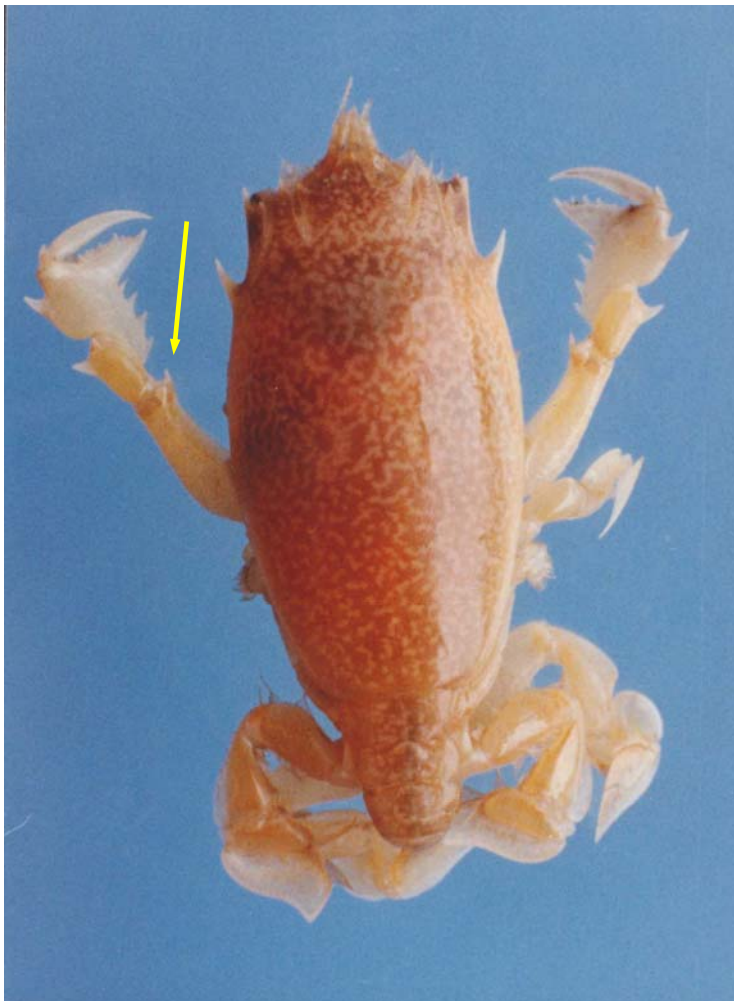
Infraorder Brachyura
Family Raninidae

References used: Abele and Kim (1986), Williams (1984), Powers (1977)

Diagnostic characters: Spine at distal end of merus of cheliped; four spines on lower margin of cheliped manus.

Habitat: Coastal/shelf species, found on mud, ooze, shelly mud, coral, and broken shell. Taken from 10-107 fathoms.

Range: Florida Keys; Caribbean; Gulf of Mexico; Pacific coasts of Panama and Colombia.



Raninoides louisianensis Rathbun, 1933
Gulf Frog Crab

Infraorder Brachyura
Family Raninidae

References used: Abele and Kim (1986), Felder (1973)

Diagnostic characters: No spine at distal end of merus of cheliped; five or six spines on lower margin of cheliped manus.

Habitat: Coastal/shelf species, muddy and fine sand bottoms, taken from 30-115 fathoms.

Range: Gulf of Mexico.

