

Hypoconcha arcuata Stimpson, 1858
Granulate Shellback Crab

Infraorder Brachyura
Section Bromiacea
Family Dromiidae

References used: Williams (1984), McLay (1993)

Diagnostic characters: Carapace flattened, membranous, hourglass shaped, frontal and later margins expanded and covering the eyes; posterior side of orbit raised but never spined; last segment of last two legs crescent shaped; legs all stout, hairy and coarsely granulate. This species does not have the strong postorbital spine or the spines on the frontal margin of the carapace as found on *H. spinosissima*.

Habitat: Usually found occupying an empty bivalve shell. Shallow water to 66 m.

Range: Cape Lookout, North Carolina to west Florida; Virgin Islands; Surinam to Brazil.



Hypoconcha spinosissima Rathbun, 1933
Spiny Shellback Crab

Infraorder Brachyura
Section Bromiacea
Family Dromiidae

References used: Williams (1984), McLay (1993)

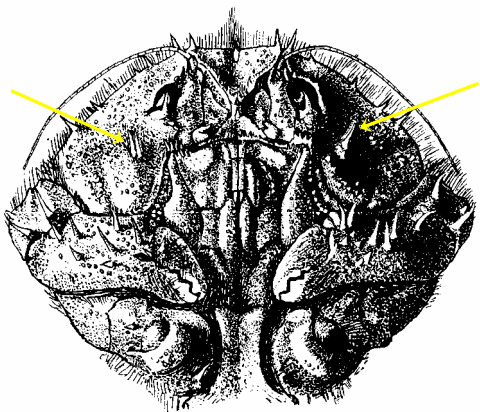
Diagnostic characters: Carapace flattened, membranous, hourglass shaped, frontal and lateral margins expanded and covering the eyes with 4 curved spines having sharp tips pointed obliquely downward; strong spine on posterior side of orbit; last segment of last two legs crescent shaped; legs all stout, hairy and coarsely granulate. *H. sabulosa* also has 4 front marginal spines, is lacking the postorbital spines, but has 3 clusters of nodules forming a triangle in the postorbital area.

Habitat: Usually found occupying an empty bivalve shell. Shallow water to 66 m.

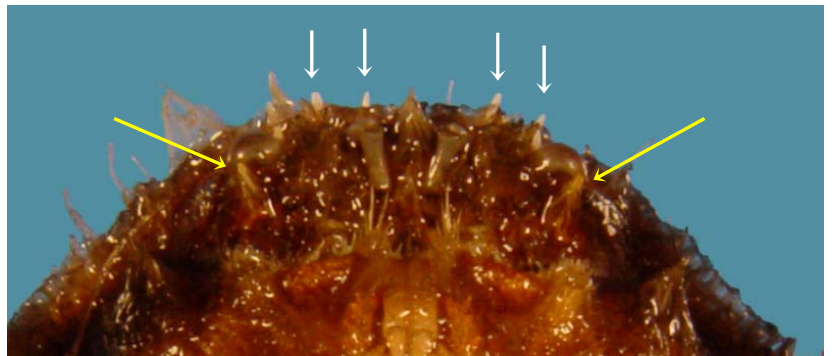
Range: Cape Lookout, North Carolina to west Florida; Virgin Islands; Surinam to Brazil.



White arrows indicate 4 front margin spines;
Yellow arrows indicate postorbital spines



From Williams (1974)



Guide to Shelf Invertebrates, Gulf of Mexico - Perry and Larsen © 2004
Draft 6/4/04