

Homola minima Guinot and Richer de Fordges, 1995
= *H. barbata* (Fabricius, 1793)

Infraorder Brachyura
Family Raninidae

References used: Williams (1984), Guinot and Richer de Fordges (1995)

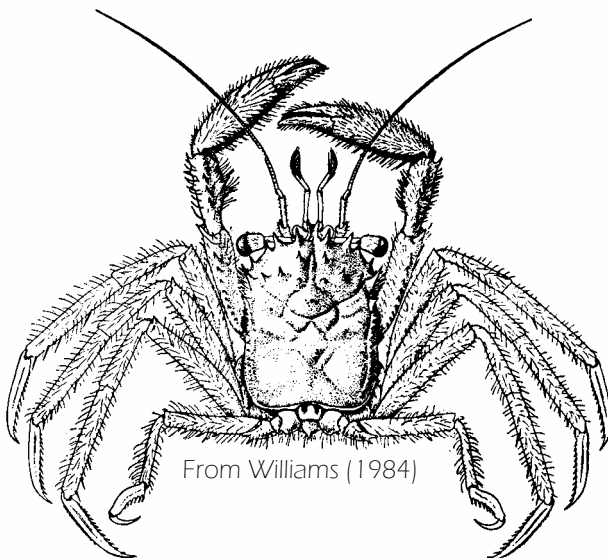
Diagnostic characters: Carapace urn-shaped; rostrum bifurcate at tip, one spine on each side at base of rostrum, one at outer orbital angle; eyestalks long, slender at base; cheliped surface granulate and hairy; last walking legs folded forward over back, yellowish-brown or reddish-brown hair, spines red.

Habitat: 55 to 682 m.

Range: Massachusetts to Brazil.



Bifurcate rostrum with spines
at base and orbital angle



From Williams (1984)