

*Aplysia brasiliana* Rang 1828  
= *A. willcoxi*  
Mottled Seahare

Class Gastropoda  
Family Aplysiidae

Classification according to Turgeon *et al.* (1998)  
References used: Eales (1960), Paul Hamilton (pers. comm.)

**Diagnostic characters:** Relatively large swimming sea hare growing up to 270 mm long. Very variable in color, the background color can vary from translucent yellow, brown, gray, green or black, usually with irregular patches and mottling of different shades of brown and green, and often with lighter spots of white or yellow. There can also be veins and streaks of black or dark brown.

**Range:** New Jersey to Brazil; Gulf of Mexico



Above: Adult (photo by Anne DuPont)  
Right: Small juvenile



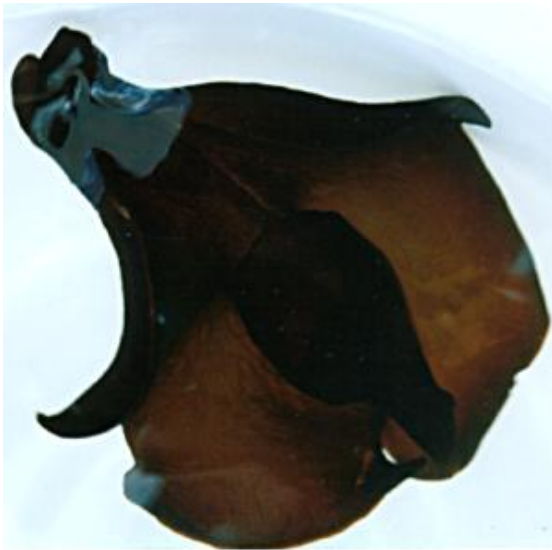
*Aplysia morio* (A.E.Verrill, 1901)  
Sooty Seahare

Class Gastropoda  
Family Aplysiidae

Classification according to Turgeon *et al.* (1998)  
References used: Eales (1960), Paul Hamilton (pers. comm.)

**Diagnostic characters:** Relatively large swimming sea hare growing up to 400 mm long. Variable in color from deep brown to black, no spots, sometimes darker lines and stripes on head and sides.

**Range:** Rhode Island to Florida through Gulf of Mexico to Texas; Bermuda.



Photos by Anne DuPont