

Pteria colymbus (Röding, 1798)
Atlantic Wing Oyster

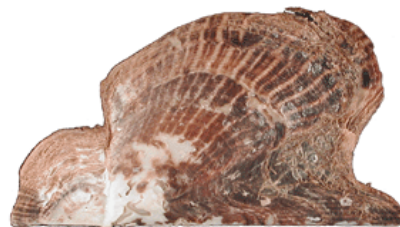
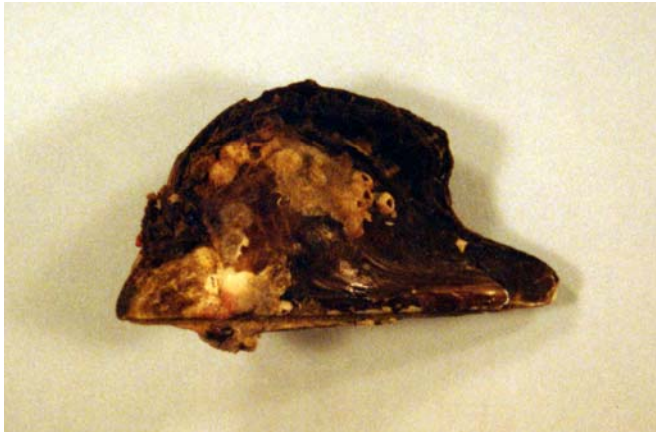
Class Bivalvia
Family Pteriidae

Classification according to Turgeon *et al.* (1998)
References used: Description from Abbott (1974)

Diagnostic characters: 1½ to 3 inches in length, obliquely oval with a long extension of the hinge line toward the posterior end. Left valve inflated. Right valve somewhat flatter and with a strong anterior notch for the byssus. Periostracum matted, brown and with cancellate fimbriations. Exterior color variable: brown, black, or brownish purple with broken, radial lines of cream or white. Interior pearly with a wide, nonpearly margin of purplish black with irregular cream rays.

Habitat: Common from low water to several fathoms, usually attached to alcyonarians.

Range: North Carolina to Florida, Texas and the West Indies and to Brazil; Bermuda.



From Bailey-Matthews Shell Museum