

Chama congregata Conrad, 1833
Corrugate Jewelbox

Class Bivalvia
Family Chamidae

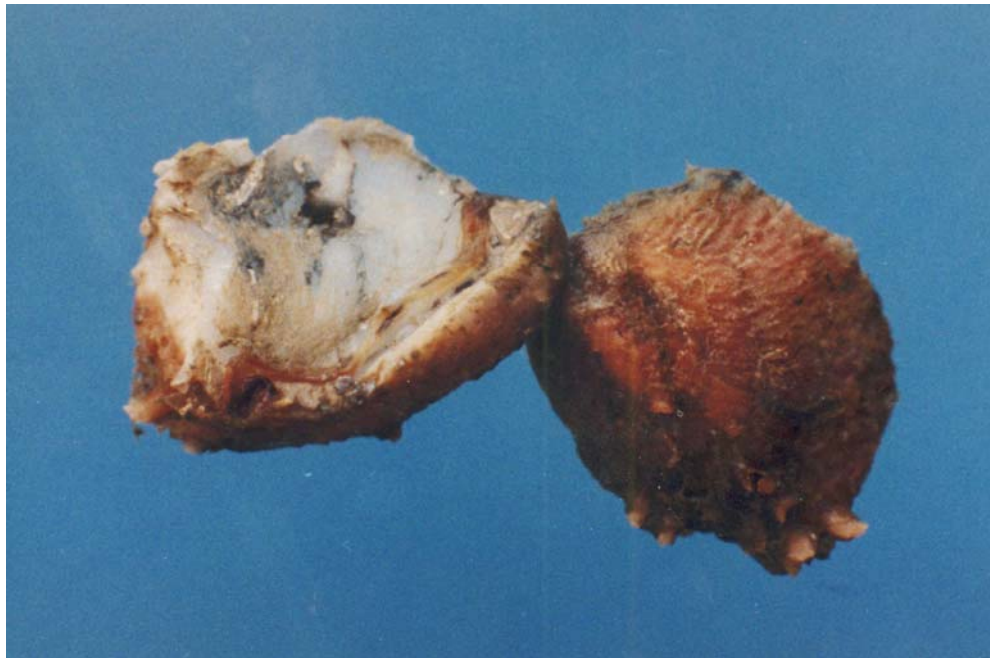
Return all specimens to the laboratory for specific identification.

Classification according to Turgeon *et al.* (1998)
References used: Description from Abbott (1974)

Diagnostic characters: Rarely over 1 inch in size. Low axial corrugations or wavy cords; unattached valve may have a few short, flat spines. Fine crenulations on the inner margins of the valves; color is usually gray with reddish specklings.

Habitat: In rocky areas they live in crevices and under stones. Commonly found attached to pen and ark shells.

Range: North Carolina to Texas to Brazil; Bermuda.



Pseudochama radians (Lamarck, 1819)
Atlantic Jewelbox

Class Bivalvia
Family Chamidae

Return all specimens to the laboratory for specific identification.

Classification according to Turgeon *et al.* (1998)
References used: Description from Abbott (1974)

Diagnostic characters: 1 to 3 inches in size. This is the only species of *Pseudochama* in eastern America. It is not very colorful, and ranges from a dull-white to a dull purplish red. The interior is commonly stained with mahogany-brown. Crenulations are present on the inner edges of the valves.

Habitat: Common; 1 to 42 fathoms.

Range: North Carolina to Texas and the West Indies; Bermuda; Brazil.

