



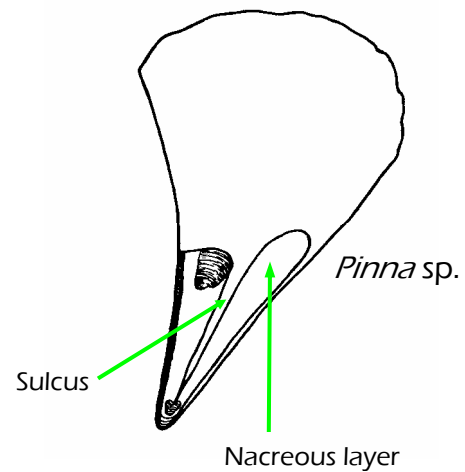
Family Pinnidae

Description – Large fragile fan shaped bivalves that live in sandy or mud-sand areas, usually in colonies. The apex (pointed end) is buried and there is a mass of byssal threads attached to small stones or shell fragments. The broad end projects above the surface about 1 inch.

Separating Genus *Pinna* from *Atrina*

Pinna – the nacreous layer (mother-of-pearl layer) is discontinuous; there is a sulcus that divides the nacreous layer into dorsal and ventral portions.

Atrina – the nacreous layer is continuous.



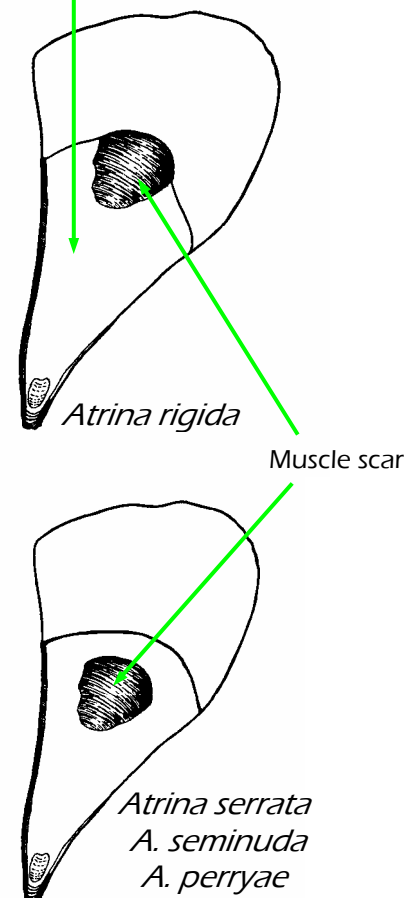
Separating *Atrina* species

Atrina rigida – can be separated from all other species by position of the posterior adductor muscle scar; in this species the muscle scar borders the posterior edge of the nacreous layer; 15-25 ribs.

A. seminuda – externally very similar to *A. rigida*, both have radial rows of heavy tubelike spines; muscle scar, well surrounded by the nacreous layer, 10-15 ribs.

A. serrata – fine sawtooth serrations that cover most of the shell; 30-40 ribs.

A. perryae – no external spines or serrations on valve, many prominent ribs



Atrina rigida (Lightfoot, 1786)
Stiff Pen Shell

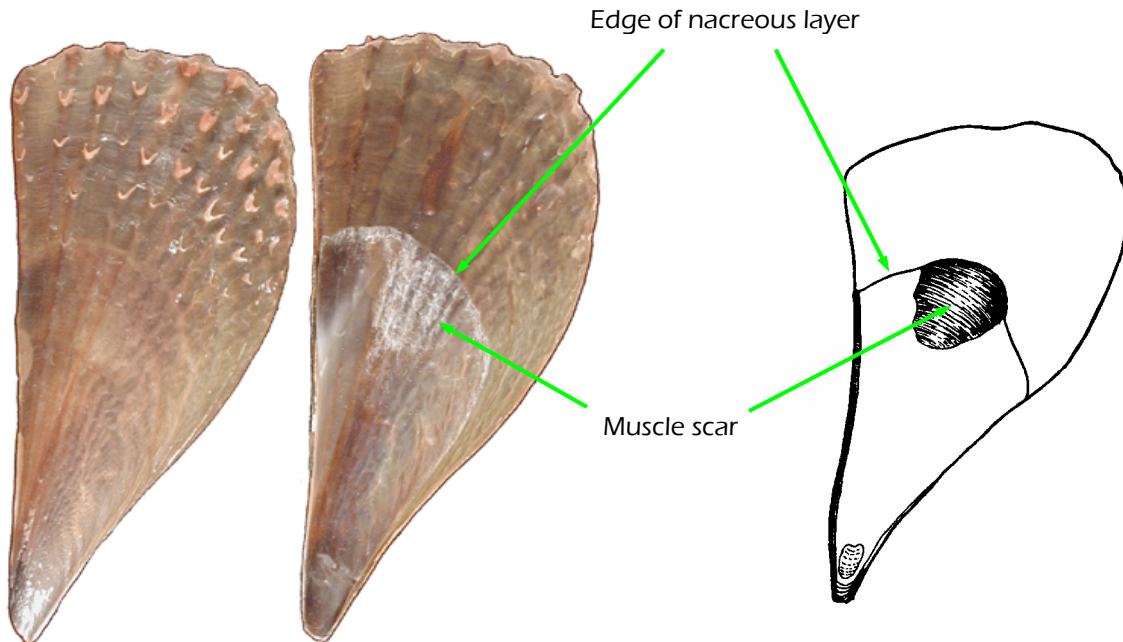
Class Bivalvia
Family Pinnidae

Classification according to Turgeon *et al.* (1998)
References used: Description from Abbott (1974)

Diagnostic characters: 5 to 11 inches in length, relatively wide, moderately thickened. 15 to 25 radial ribs of heavy tubelike spines. Mantle is bright golden orange; **internal muscle scar borders edge of nacreous layer.**

Habitat: Shore to 27 m, sandy or mud-sand areas, usually in colonies. The apex or pointed end is deeply buried and the broad end of the shell projects above the surface of the sand.

Range: North Carolina to Florida, Gulf of Mexico, Caribbean.



From Bailey-Matthews Shell Museum

Atrina seminuda (Lamarck, 1819)
Half-naked Pen Shell

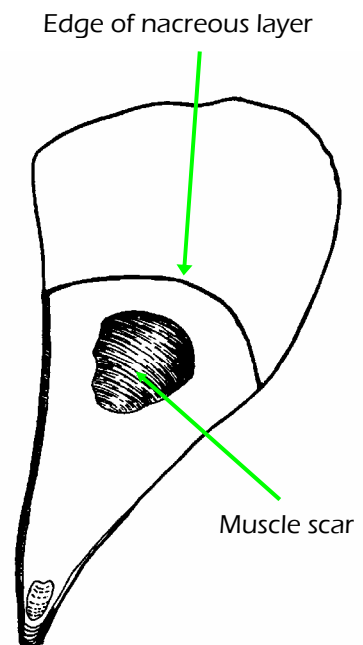
Class Bivalvia
Family Pinnidae

Classification according to Turgeon *et al.* (1998)
References used: Description from Abbott (1974)

Diagnostic characters: 5 to 9 inches in length, relatively wide, moderately thickened. 10 to 15 radial ribs of heavy tubelike spines. **Externally similar to *A. ridiga*, internal muscle scar well below edge of nacreous layer.**

Habitat: Variable and common, just offshore. Sandy or mud-sand areas, usually in colonies. The apex or pointed end is deeply buried and the broad end of the shell projects above the surface of the sand.

Range: North Carolina to Texas, to Argentina.



Atrina serrata (Sowerby, 1825)
Saw-tooth pen shell

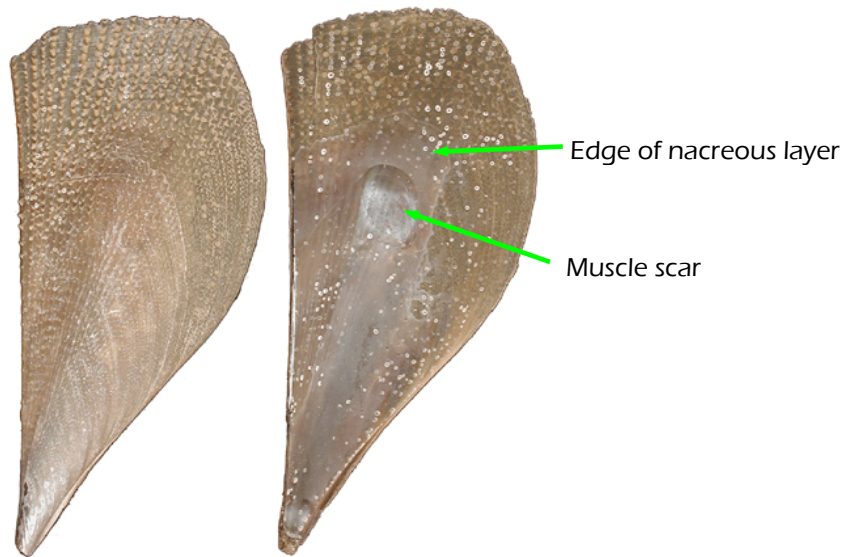
Class Bivalvia
Family Pinnidae

Classification according to Turgeon *et al.* (1998)
References used: Description from Abbott (1974)

Diagnostic characters: 6 to 12 inches in length, this shell, moderately inflated, with about 30 finely scaled ribs. Internal muscle scar well below edge of nacreous layer.

Habitat: Sandy-mud from shore to several fathoms.

Range: North Carolina to Florida, Texas, and the West Indies.



From Bailey-Matthews Shell Museum