

Texas Blue Crab Update

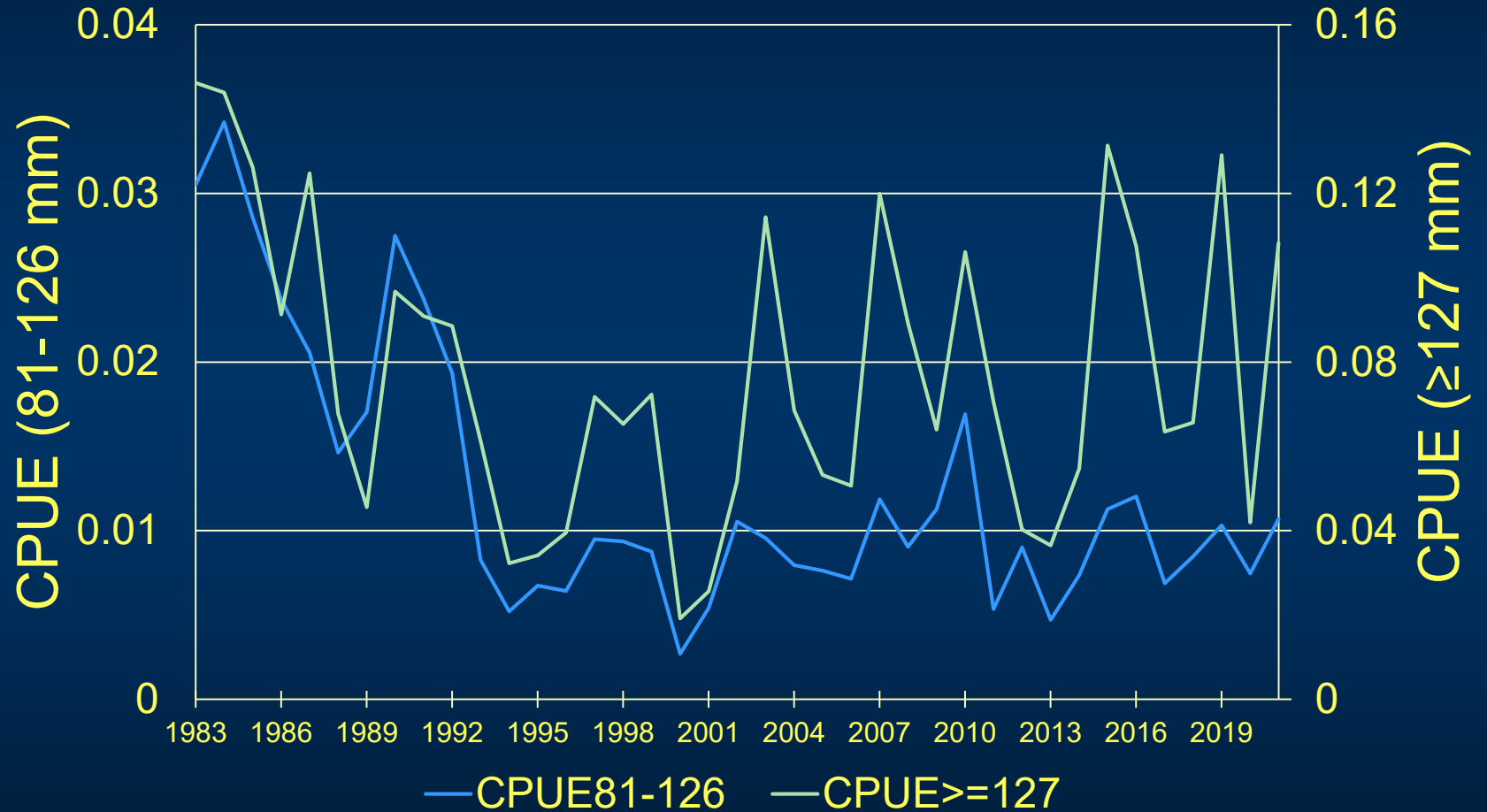
October 2022

Zachary Olsen, Stephen Hale, Tom Wagner
Texas Parks and Wildlife Department

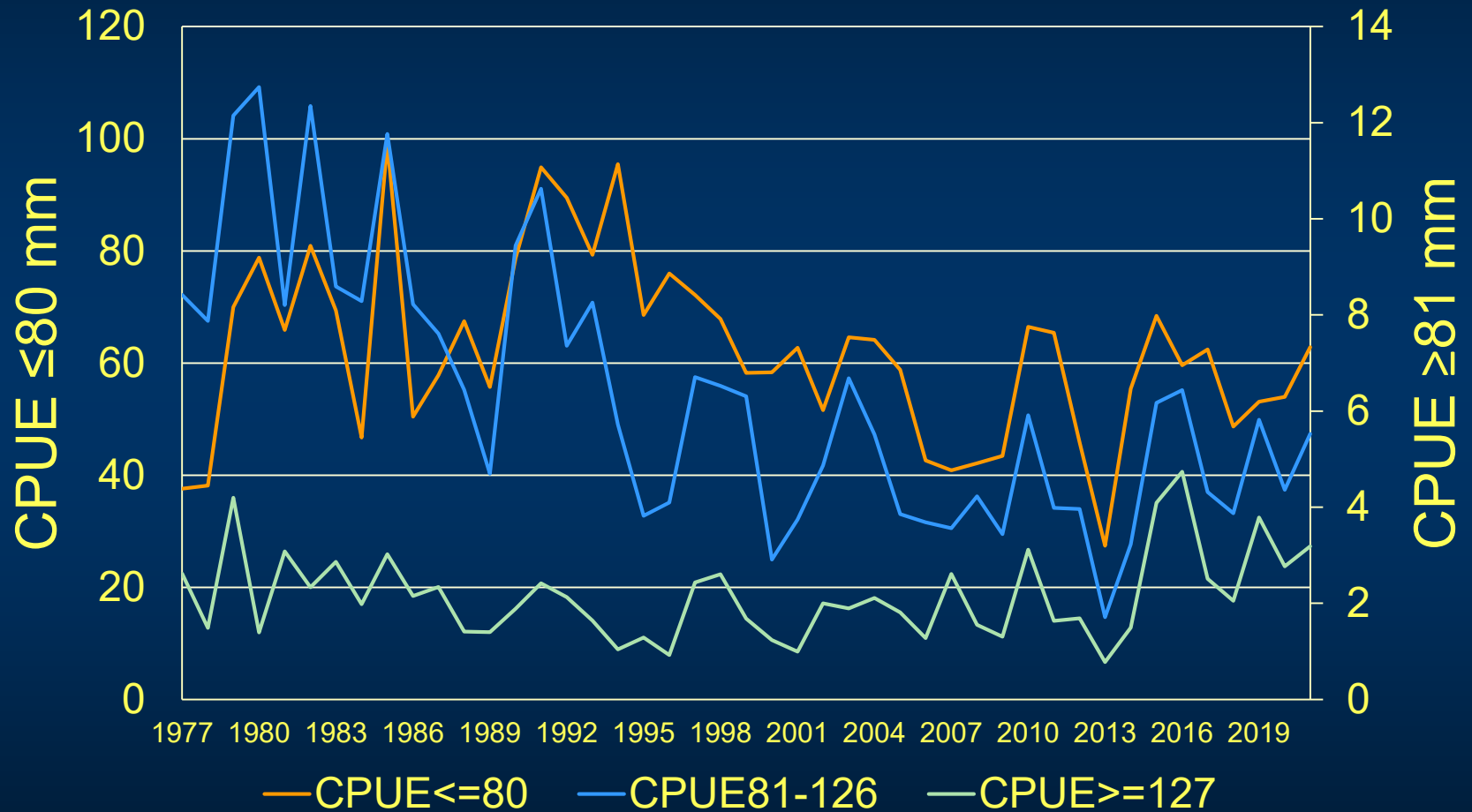


Abundance Trends (Fishery Independent)

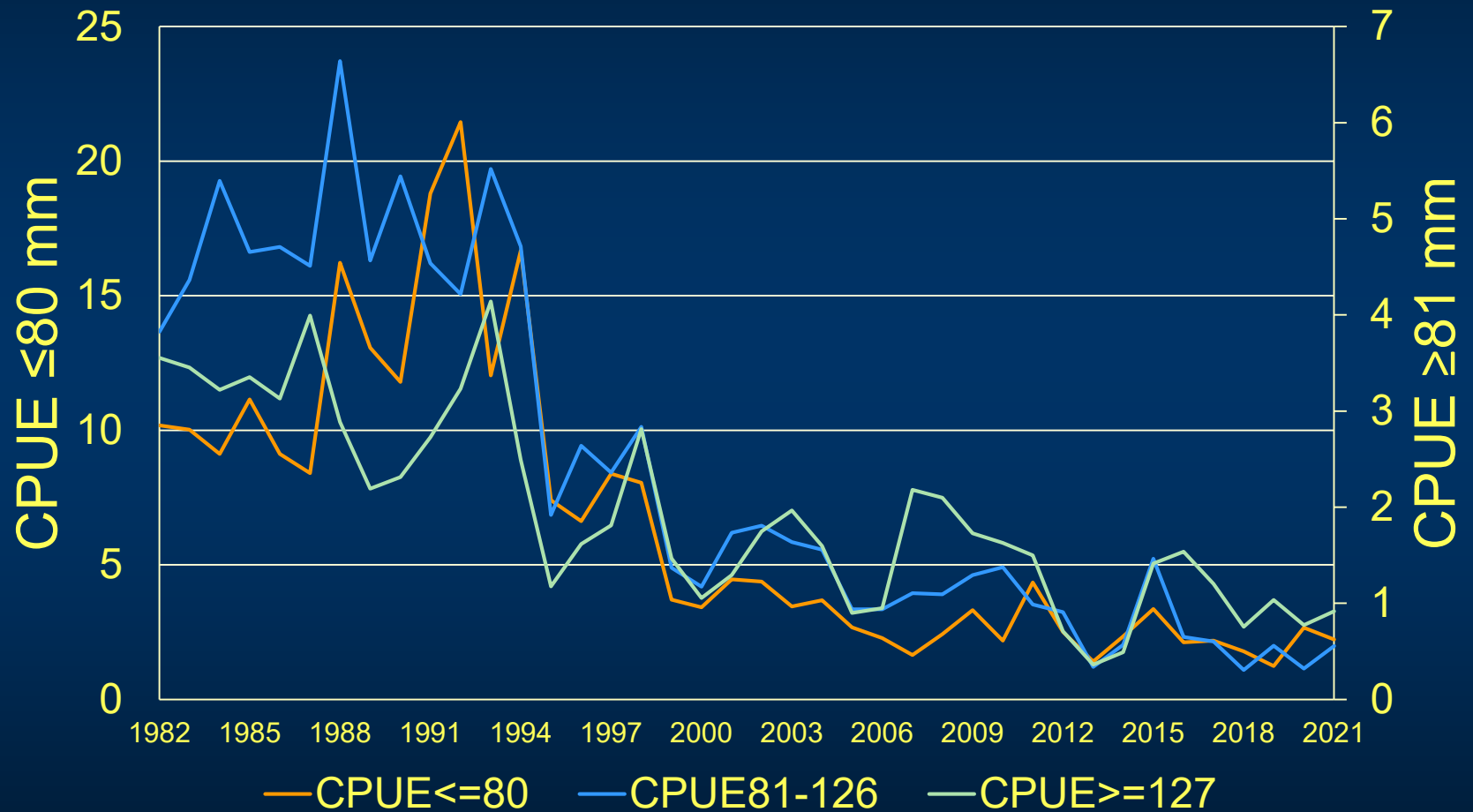
Fishery Independent Gill Net Surveys



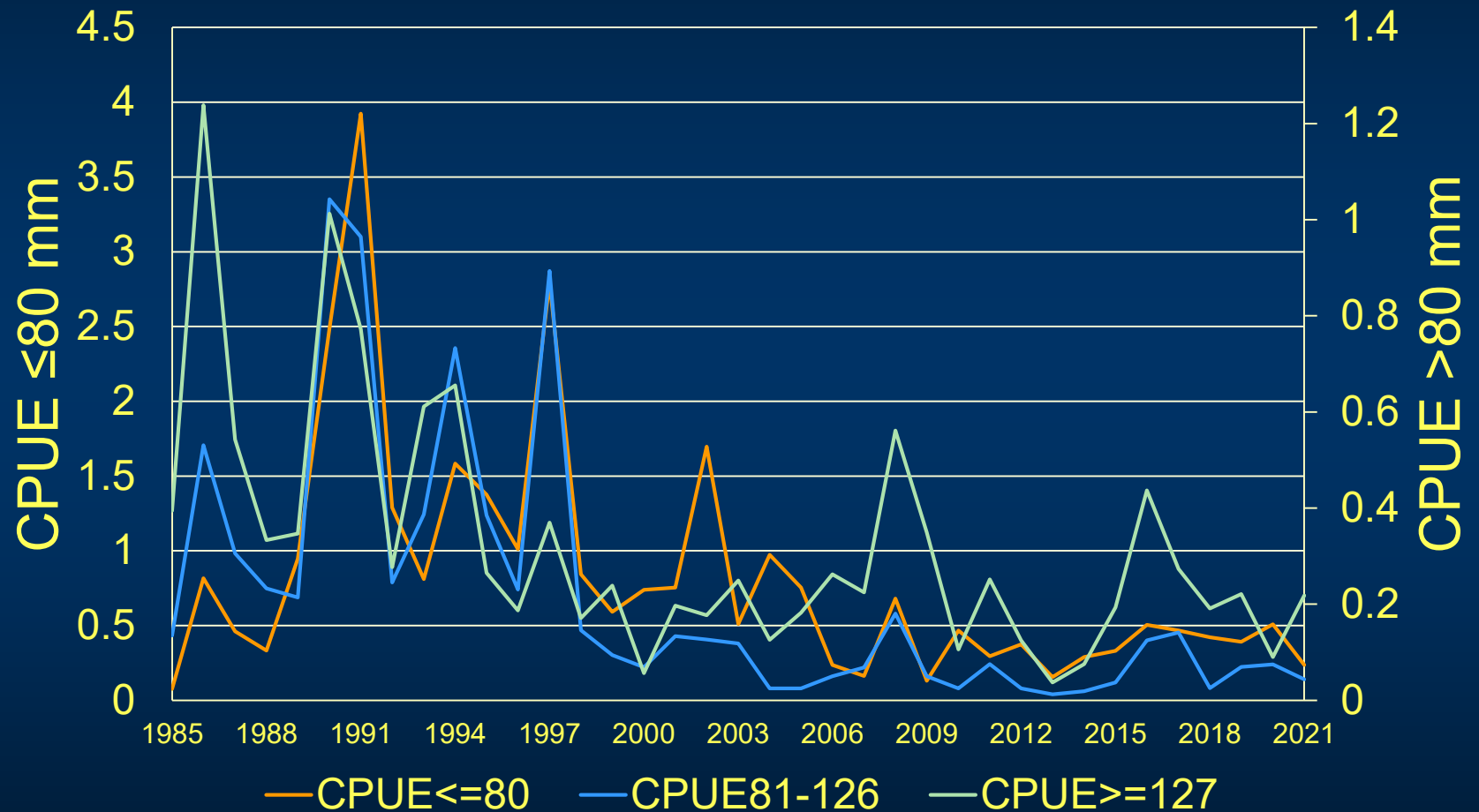
Fishery Independent Bag Seine Surveys



Fishery Independent Bay Trawl Surveys



Fishery Independent Gulf Trawl Surveys

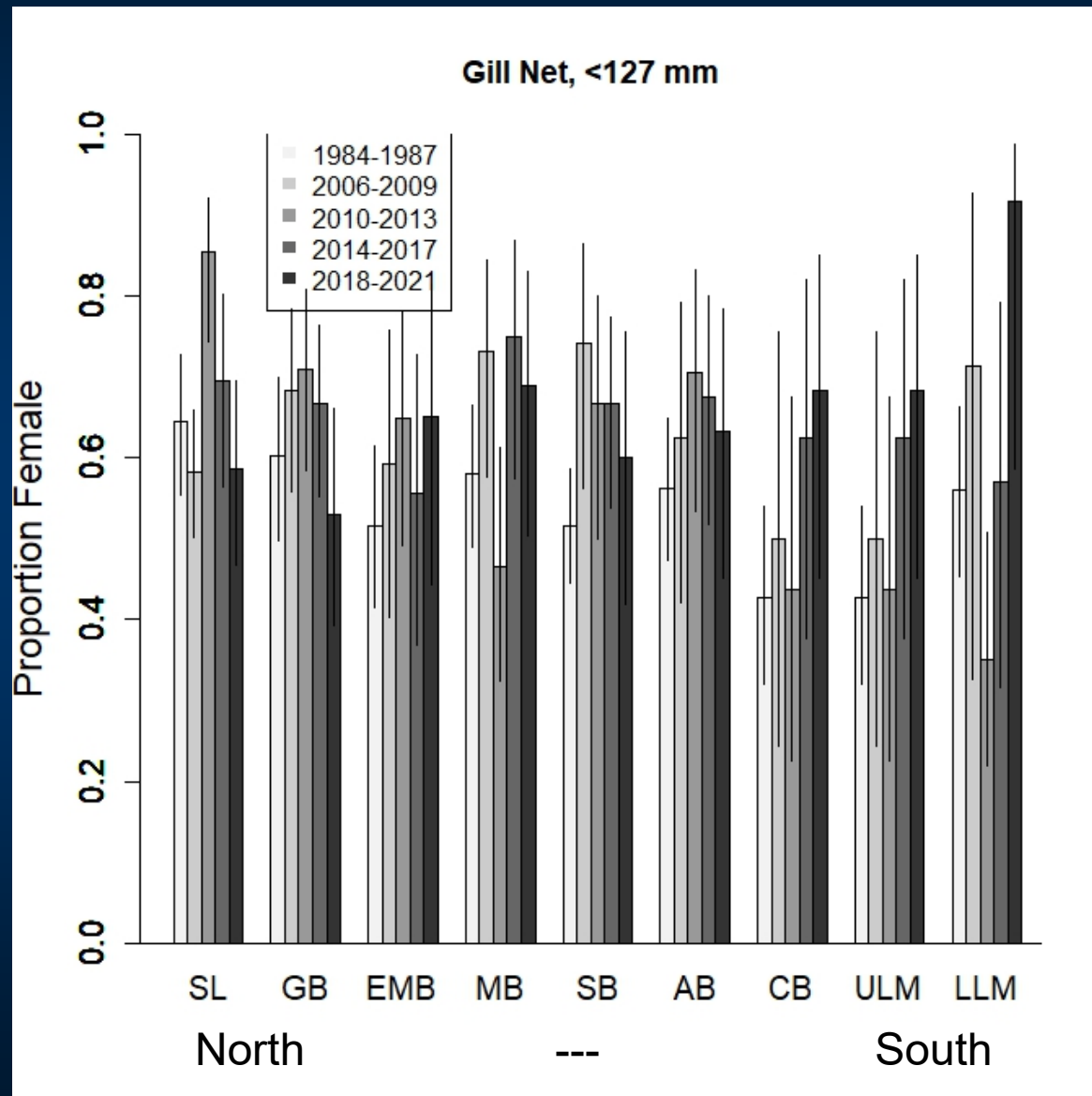


Fishery Independent Summary

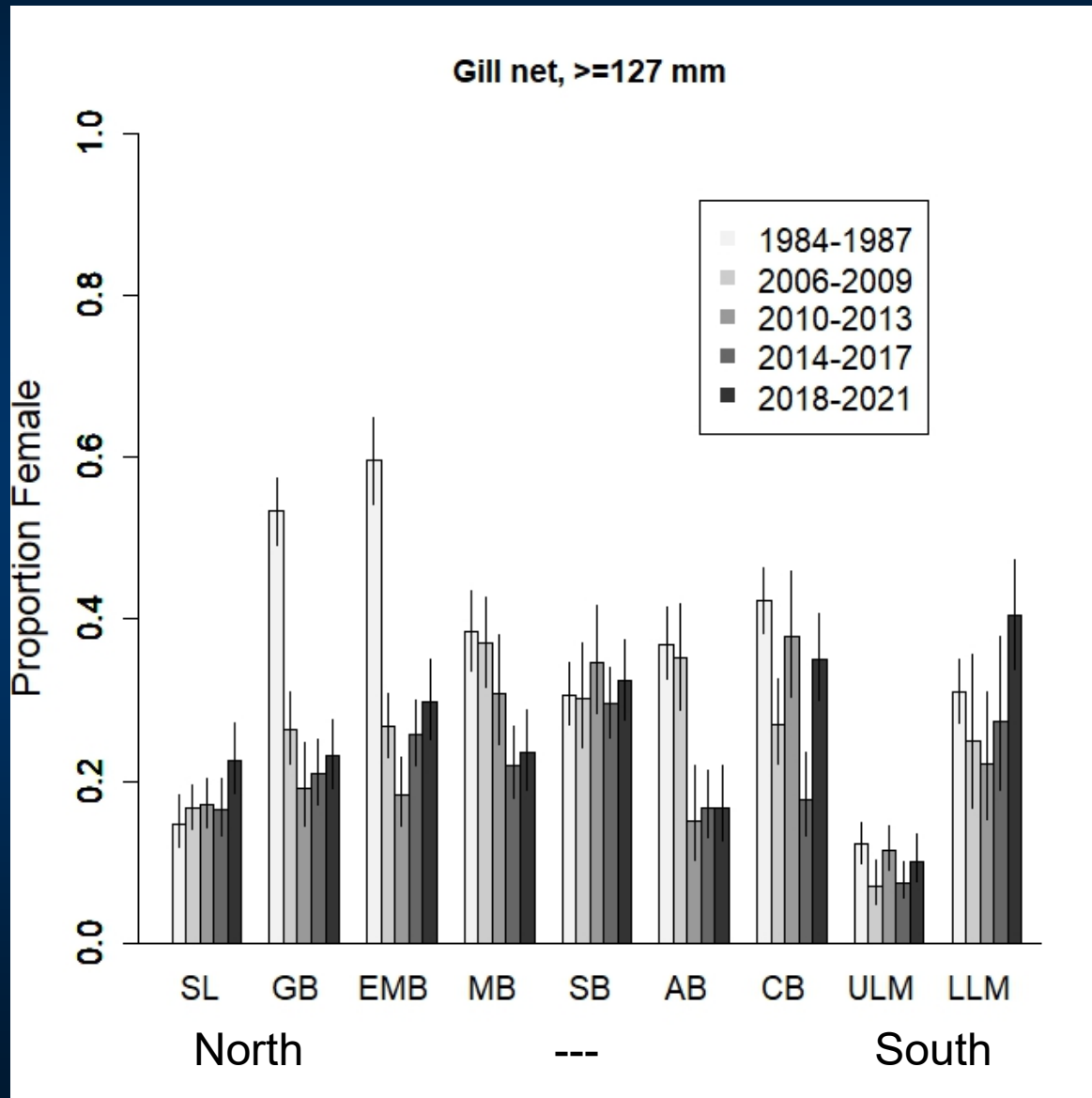
- Trends differ by sampling gear
 - Sustained low abundance in trawls
 - Some improvement in seines and gill nets (mainly in adult size class)
- Open water vs. shore-based trends (habitat related?)

Proportion Female Crabs (Fishery Independent)

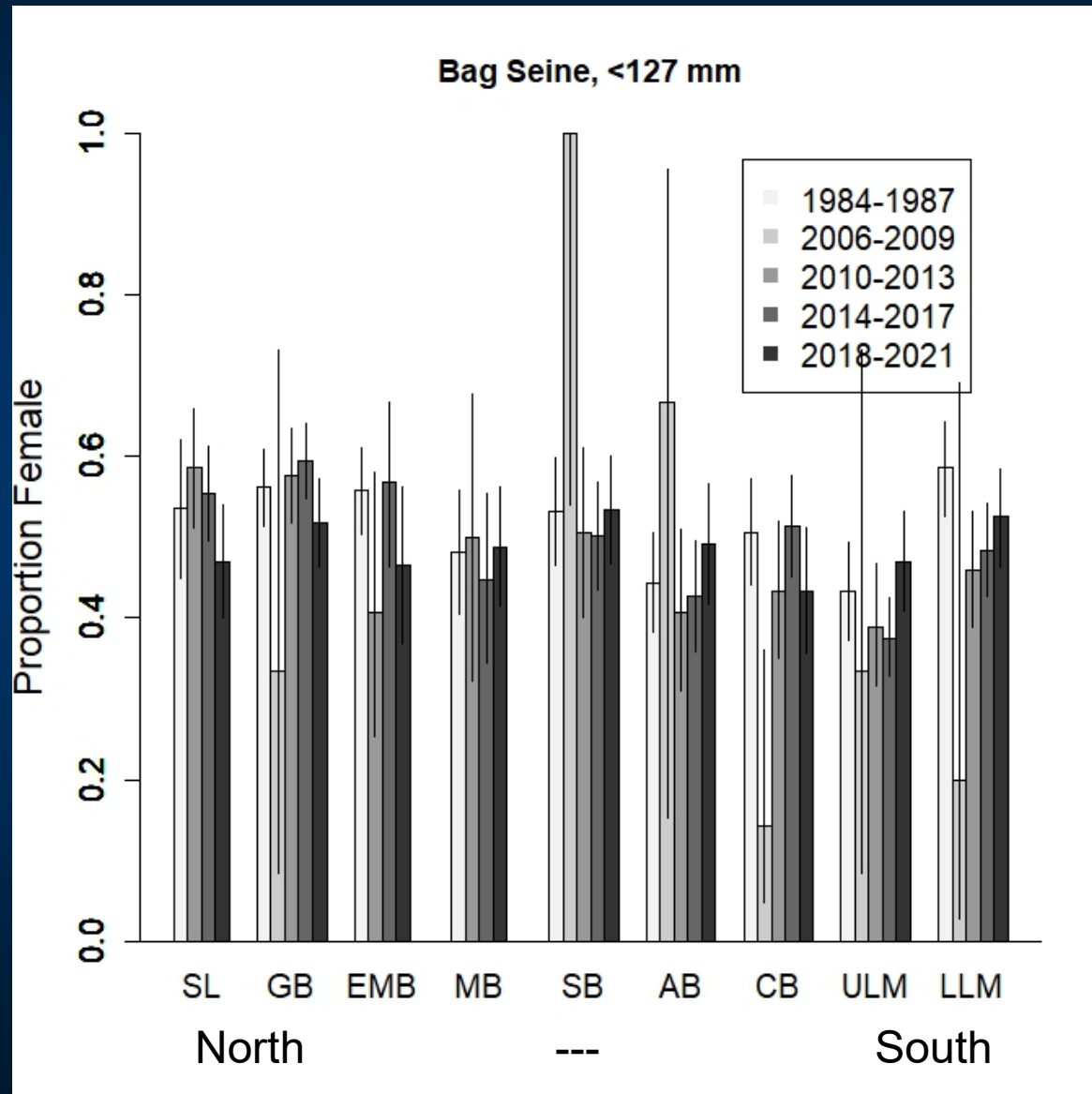
Proportion Female, Gill Net, Sub-legal (< 127 mm)



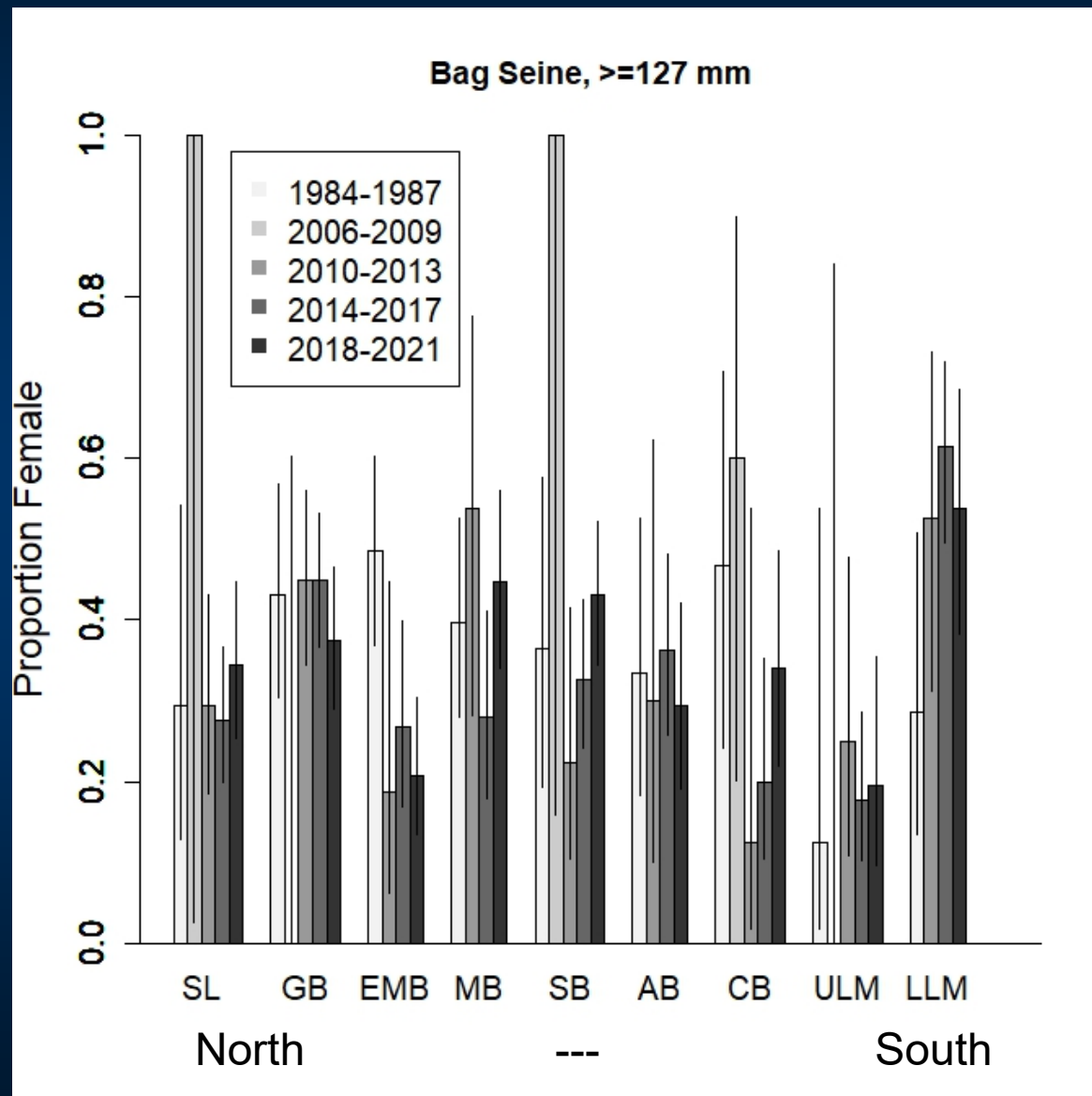
Proportion Female, Gill Net, Legal (≥ 127 mm)



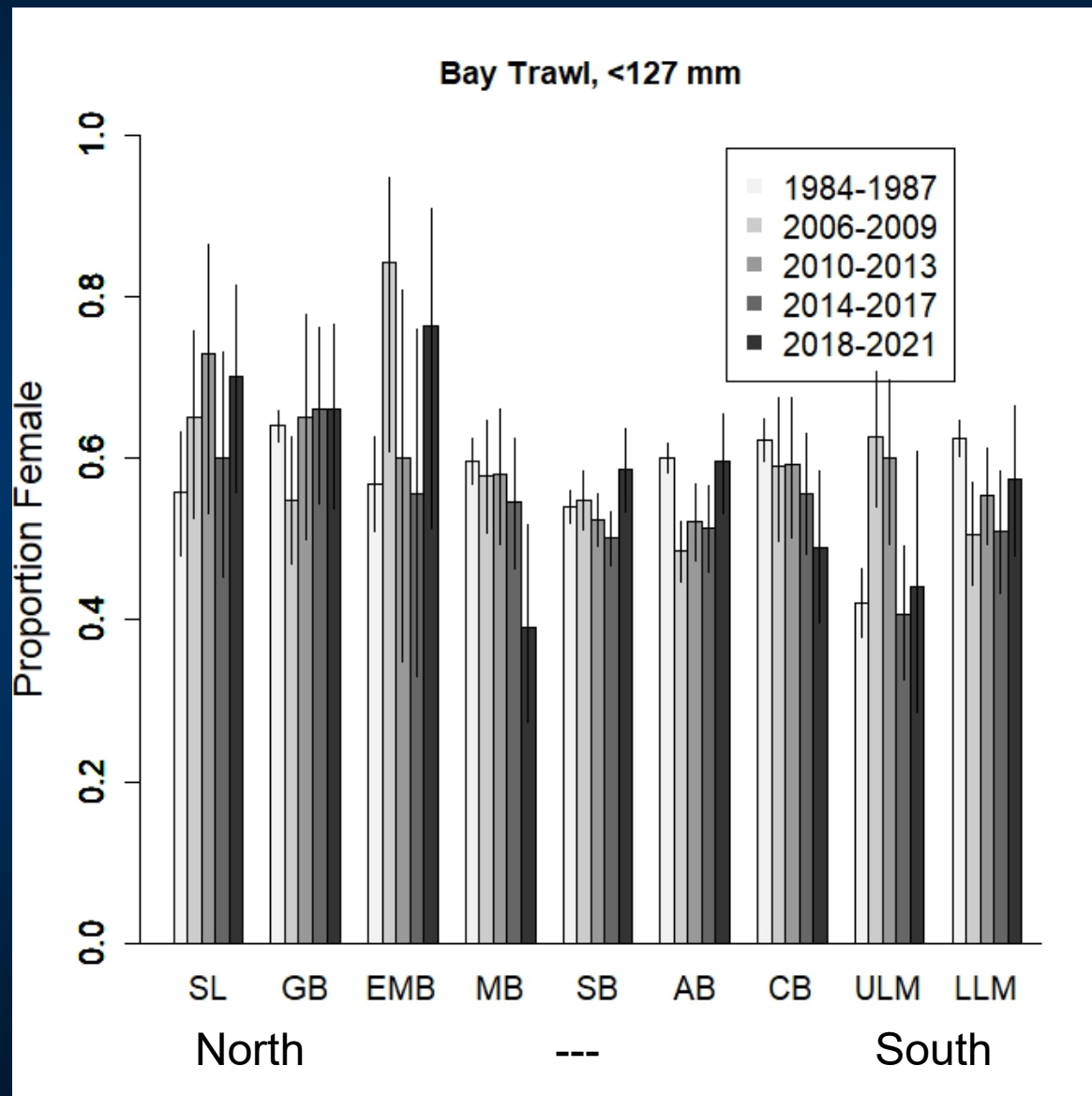
Proportion Female, Seine, Sub-legal (< 127 mm)



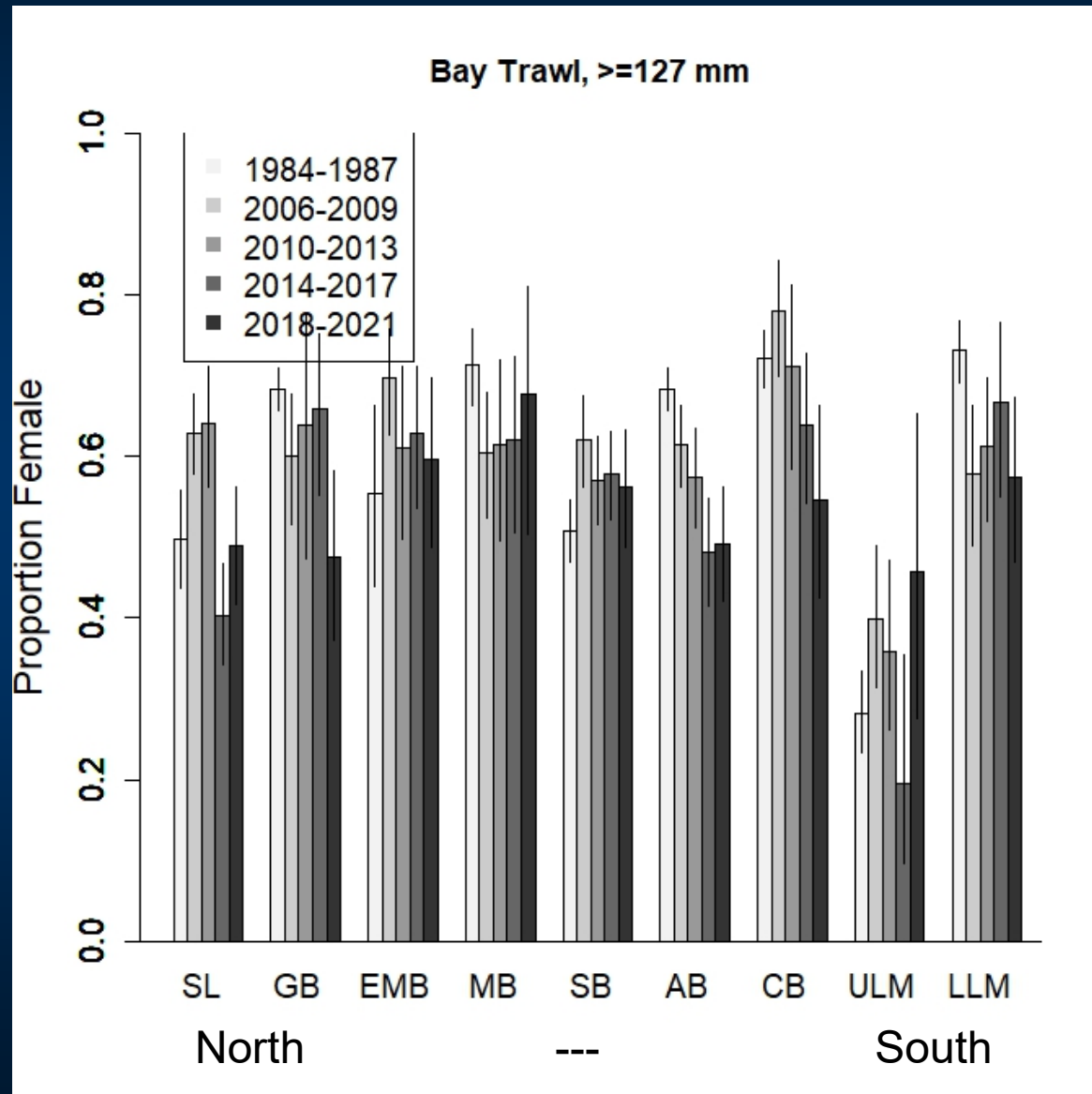
Proportion Female, Seine, Legal (≥ 127 mm)



Proportion Female, Bay Trawl, Sub-legal (< 127 mm)



Proportion Female, Bay Trawl, Legal (≥ 127 mm)

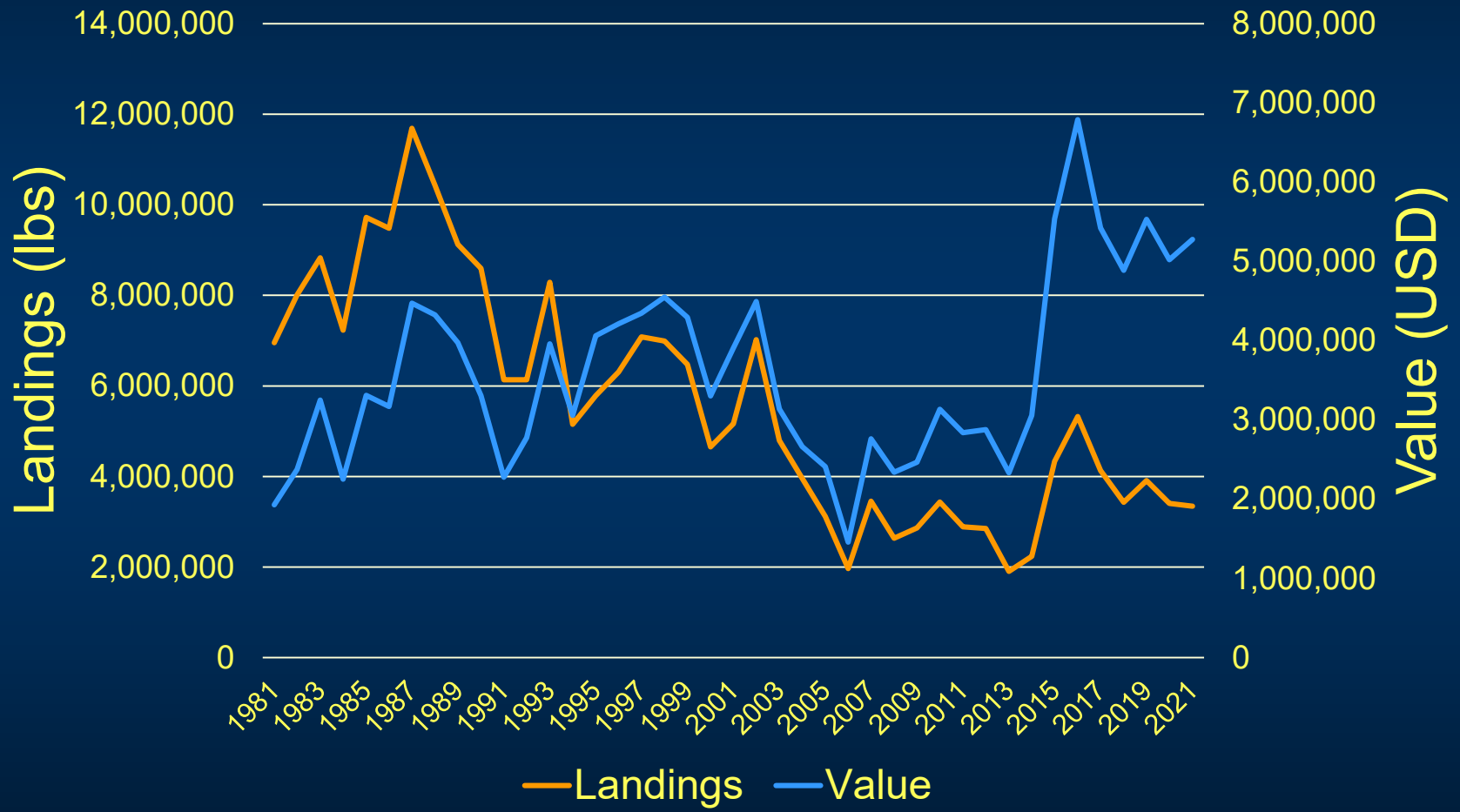


Proportion by Sex Summary

- Difference in sex ratio by gear and size class (likely habitat and gear selectivity)
- No obvious large-scale trends in proportion female across the timeseries

Harvest Trends

Commercial Landings and Value



Commercial Landings and Value Per Trip

