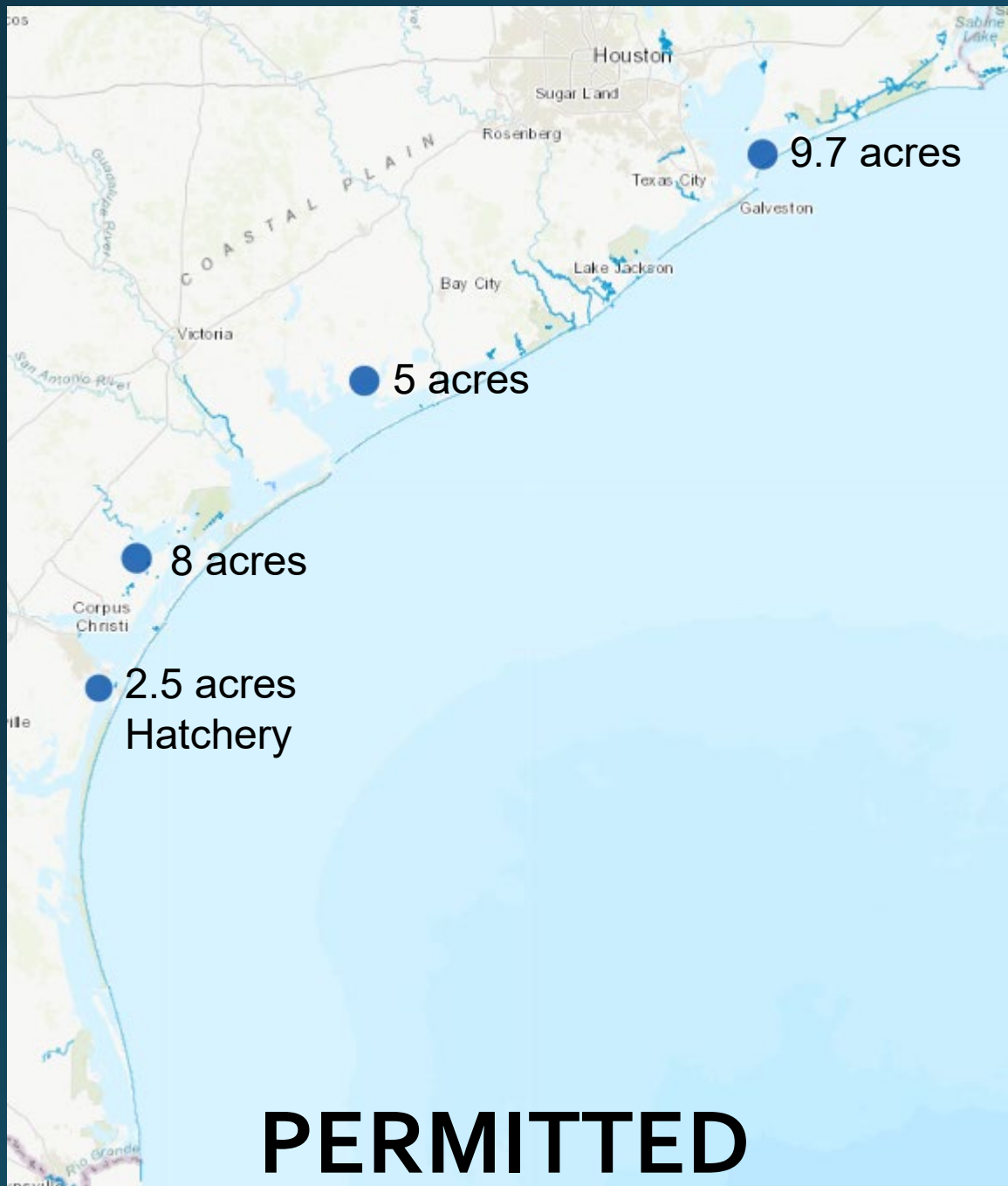




TEXAS STATE OYSTER UPDATES

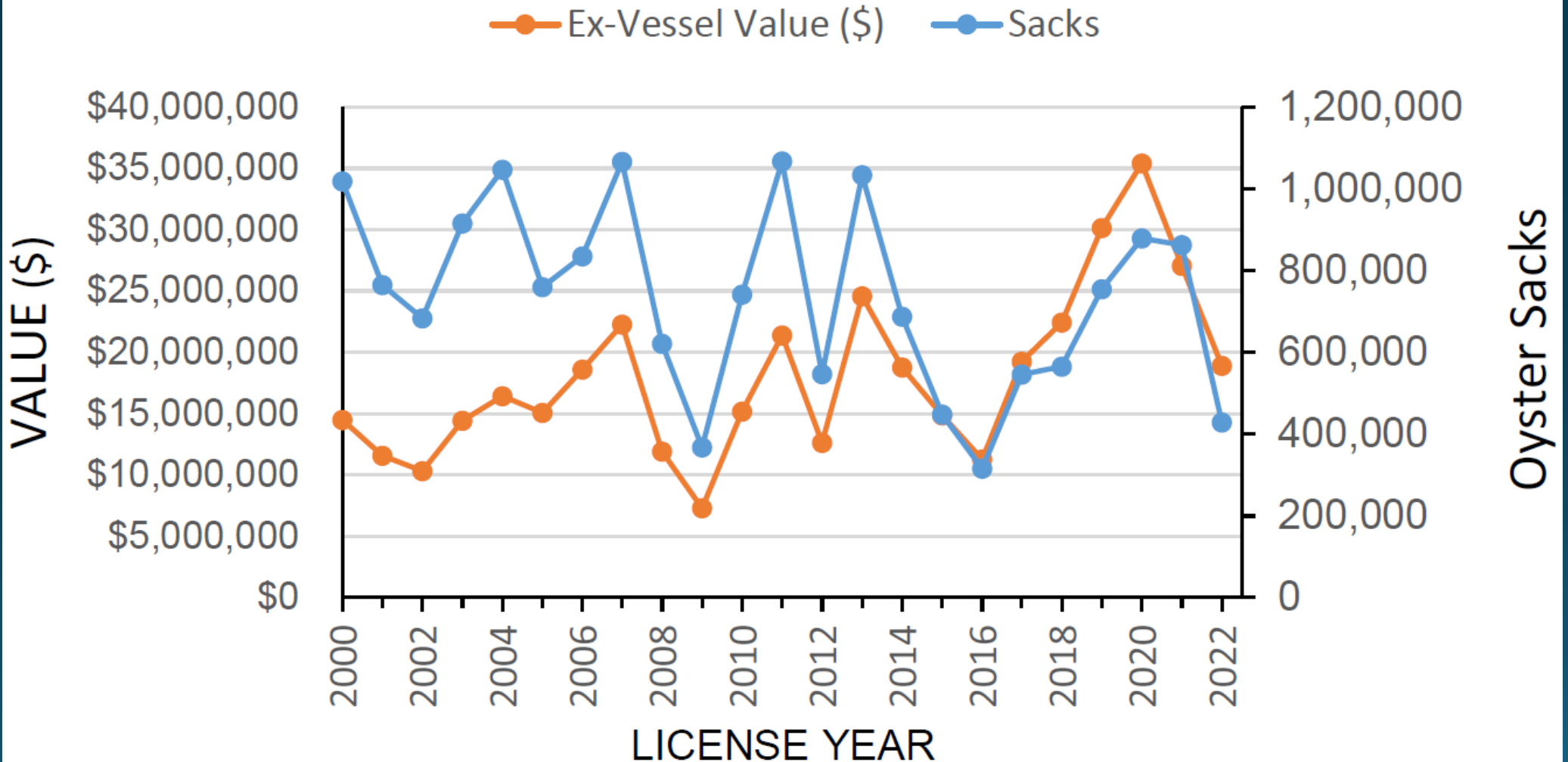
Off-Bottom Cultivated Oyster Mariculture Updates

- Rules adopted and applications accepted in 2020
- Continuing to refine the program processes, procedures, guidance documents, and applications
 - Online application portal in development
 - Developed hatchery permitting and oversight process
 - Updated Biosecurity and Genetic Integrity Protocols
 - Still developing integrated reporting forms
 - Coordinating with GLO to host online Spatial Planning Tool



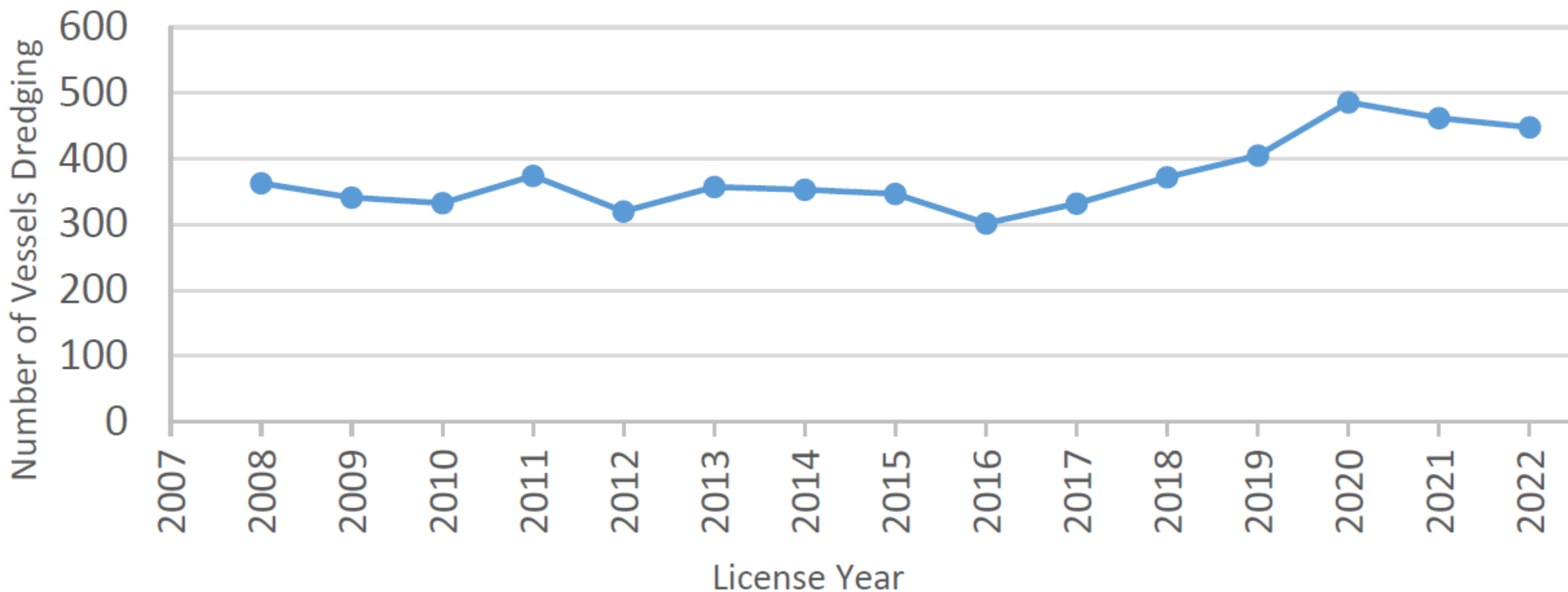
On-Bottom Commercial Oyster Landings Public and Private Reefs

Texas Commercial Oyster Landings

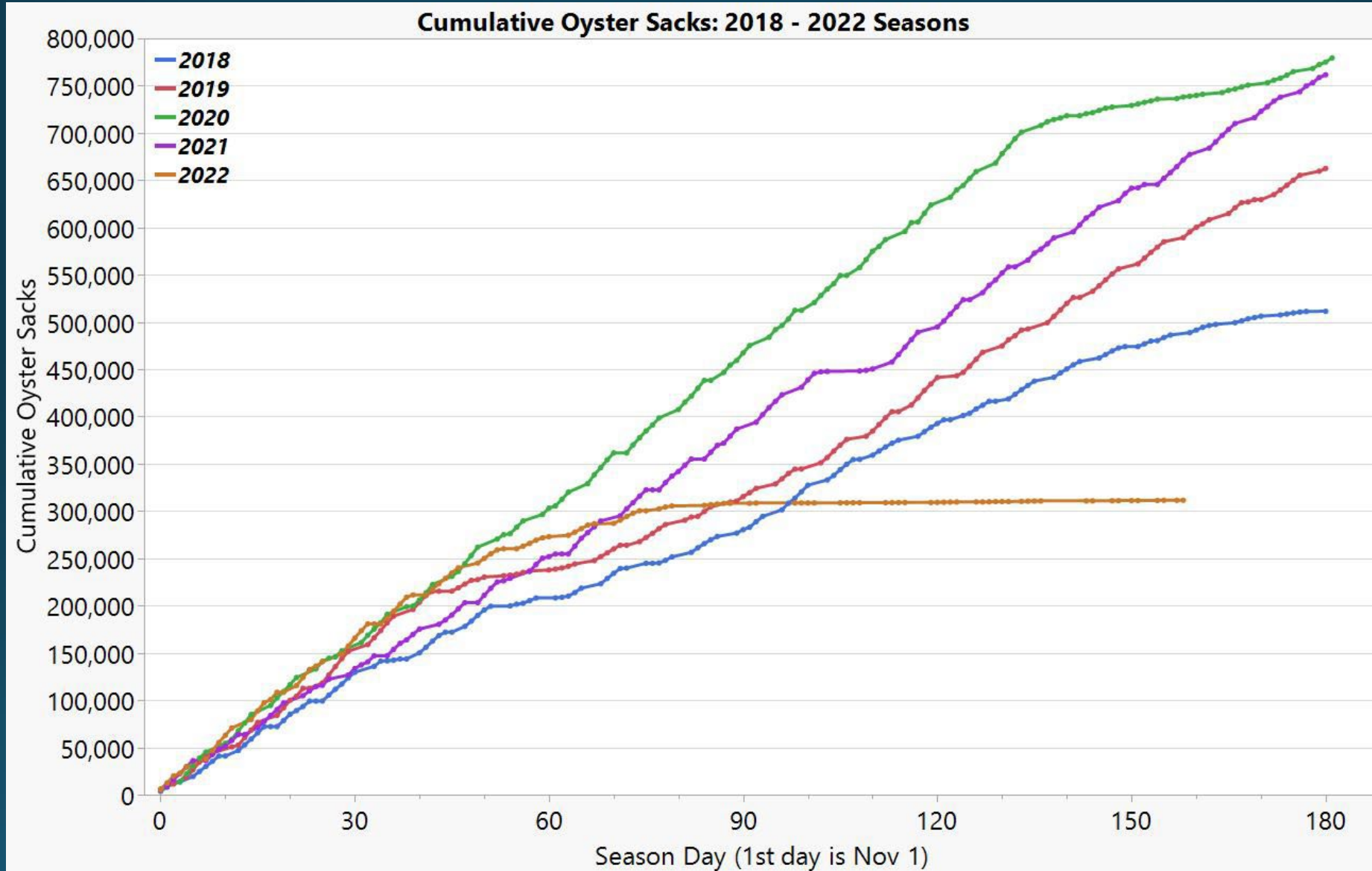


On-Bottom Commercial Oyster Landings Public and Private Reefs

Active Commercial Oyster Vessels



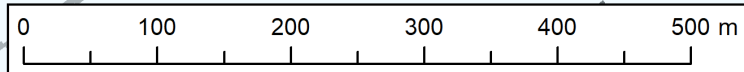
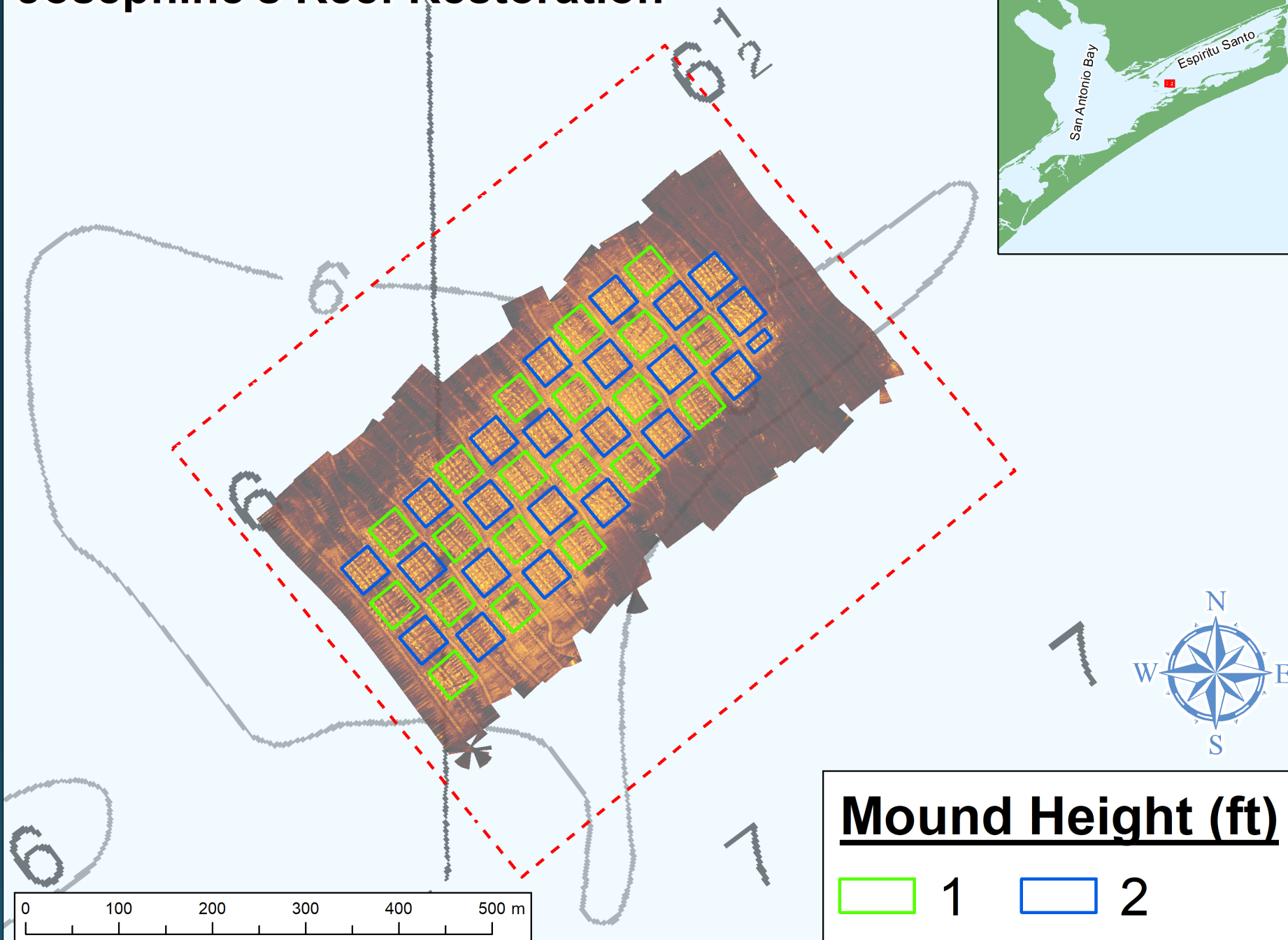
On-Bottom Commercial Oyster Landings Public and Private Reefs



Oyster Shell Recovery

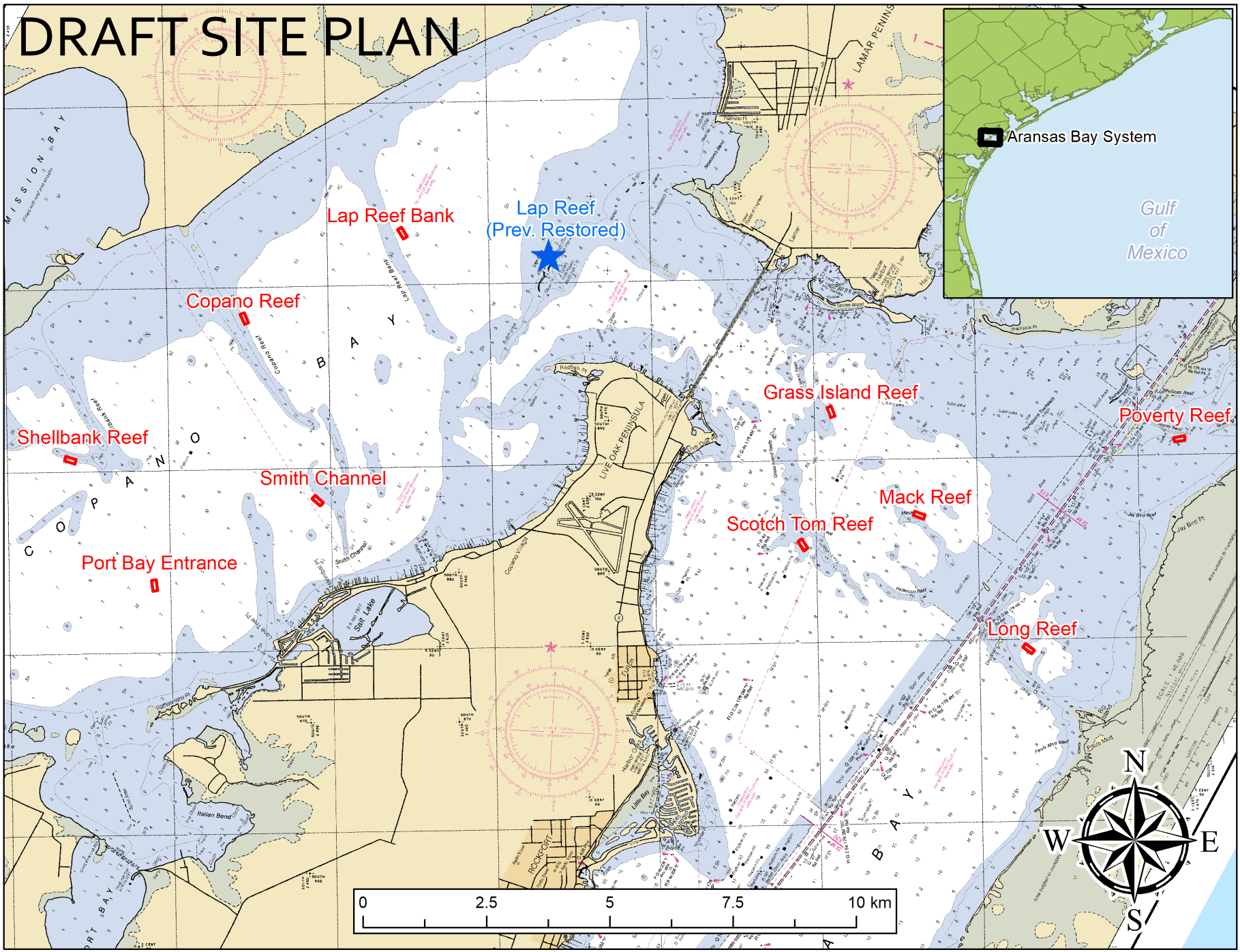
LY	Sacks Harvested	Cultch Due (cu yds)	Fee in lieu of cultch	Final Disposition (actual)		% accounted for
				Cultch (cu yds)	Fee (\$)	
2018	564,787	9,805.30	\$745,518	6,590.5	\$248,448	100.5
2019	754,565	13,100.00	\$996,025	9,705.3	\$228,047	97.0
2020	878,503	15,251.70	\$1,159,624	3,219.9	\$306,294	47.5
2021	861,939	14,964.12	\$1,137,759	16,150.2	\$242,715	129.3
2022	424,002	7,361.10	\$559,683	7,428.4	\$135,151	125.1
Total	3,483,796	60,482.22	\$4,598,609	43,094.3	\$1,160,655	96.5
Balance (as of 8/31/2022)		2,143.3	\$162,963	71.3%	25.2%	

Josephine's Reef Restoration



Mound Height (ft)





Proposed Closure of Carlos, Mesquite, and Ayres Bays

- 3 ecologically important/sensitive bays
- Experienced increased harvest pressure
- Initial proposal tabled in March 2022
- Formed of 2 oyster work groups:
 - Regulation
 - Restoration

